

## Product datasheet for **TA386355**

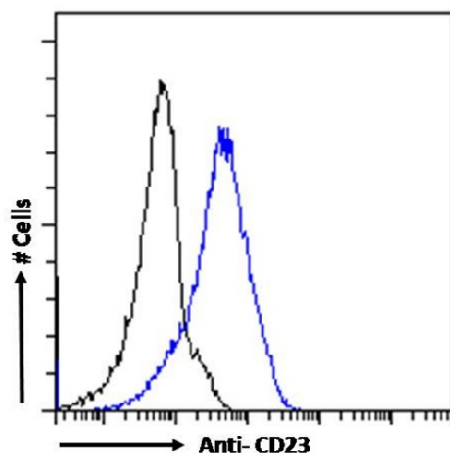
### CD23 (FCER2) Rabbit Monoclonal Antibody [Clone ID: CAT-13.9C1]

#### Product data:

Product Type:	Primary Antibodies
Clone Name:	CAT-13.9C1
Applications:	IF
Reactivity:	Human
Host:	Rabbit
Isotype:	IgG, kappa
Clonality:	Monoclonal
Immunogen:	This antibody was raised by immunising mice with with an EBV-transformed human B cell line from a patient with MHC class II deficiency re-expressing class II antigens.
Specificity:	This antibody recognises CD23, which is a low-affinity receptor for immunoglobulin E (IgE) and CR2/CD21. Has essential roles in the regulation of IgE production and in the differentiation of B-cells.  CD23 is a B-cell-specific marker and thus this antibody can be utilised in the identification and analysis of B-cells and B-cell-derived cancers.
Formulation:	PBS with 0.02% Proclin 300.
Concentration:	lot specific
Conjugation:	Unconjugated
Storage:	Please store at 4°C for up to 3 months. For longer storage, aliquot and store at -20°C. Avoid freeze and thaw cycles.
Stability:	3 years from dispatch.
Gene Name:	Fc fragment of IgE receptor II
Database Link:	<a href="#">Entrez Gene 2208 Human P06734</a>
Synonyms:	BLAST-2; CD23; CD23A; CLEC4J; Fc-epsilon-R1I; FCE2; IGEBF
Note:	This chimeric rabbit antibody was made using the variable domain sequences of the original Mouse IgG2a format, for improved compatibility with existing reagents, assays and techniques.



[View online »](#)

**Product images:**

Flow cytometry using the Anti-CD23 antibody CAT-13.9C1 (TA386355). Paraformaldehyde fixed Daudi cells were stained with anti-unknown specificity antibody ([TA385792]; isotype control, black line) or the rabbit IgG version of CAT-13.9C1 (TA386355, blue line) at a dilution of 1:100 for 1h at RT. After washing, the bound antibody was detected using a goat anti-rabbit IgG AlexaFluor® 488 antibody at a dilution of 1:1000 and cells analyzed using a FACSCanto flow-cytometer.