

## Product datasheet for **TA386351**

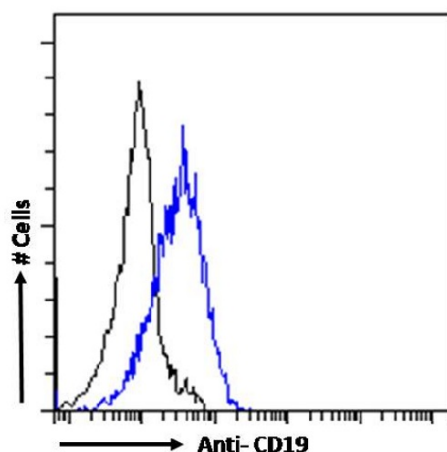
### CD19 Rabbit Monoclonal Antibody [Clone ID: CAT-13.1E10]

#### Product data:

Product Type:	Primary Antibodies
Clone Name:	CAT-13.1E10
Reactivity:	Human
Host:	Rabbit
Isotype:	IgG, kappa
Clonality:	Monoclonal
Immunogen:	This antibody was raised by immunising mice against CD19.
Specificity:	CAT 13.1E10 antibody recognises CD19, which is a transmembrane glycoprotein that regulates B lymphocyte development, activation, and differentiation.  This antibody is recommended for targeting and analysis of B cells. CAT-13.1E10 was used as a part of a fusion molecule aimed at intracellular delivery of BINDI in order to establish a potential treatment method of EBV-positive B lymphoma in a xenograft mouse model (US20160376333A1).
Formulation:	PBS with 0.02% Proclin 300.
Concentration:	lot specific
Conjugation:	Unconjugated
Storage:	Please store at 4°C for up to 3 months. For longer storage, aliquot and store at -20°C. Avoid freeze and thaw cycles.
Stability:	3 years from dispatch.
Gene Name:	CD19 molecule
Database Link:	<a href="#">Entrez Gene 930 Human P15391</a>
Synonyms:	B4; Leu-12; MGC12802
Note:	This chimeric rabbit antibody was made using the variable domain sequences of the original Mouse IgG1 format, for improved compatibility with existing reagents, assays and techniques.



[View online »](#)

**Product images:**

Flow cytometry using the Anti-CD19 antibody CAT-13.1E10 (TA386351). Paraformaldehyde fixed Daudi cells were stained with anti-unknown specificity antibody ([TA385792]; isotype control, black line) or the rabbit IgG version of CAT-13.1E10 (TA386351, blue line) at a dilution of 1:100 for 1h at RT. After washing, the bound antibody was detected using a goat anti-rabbit IgG AlexaFluor® 488 antibody at a dilution of 1:1000 and cells analyzed using a FACSCanto flow-cytometer.