

## Product datasheet for **TA386342**

### IL10ra Rabbit Monoclonal Antibody [Clone ID: 1B1.3a]

#### Product data:

Product Type:	Primary Antibodies
Clone Name:	1B1.3a
Applications:	BI, FC
Reactivity:	Mouse
Host:	Rabbit
Isotype:	IgG, kappa
Clonality:	Monoclonal
Immunogen:	This antibody was raised by immunising rats with the purified recombinant extracellular region of mouse Interleukin 10 Receptor.
Specificity:	<p>This antibody recognises mouse IL-10R which is a cell surface glycoprotein and a receptor for anti-inflammatory IL-10. The epitope recognised by this antibody has been localised to the ligand binding domain within the extracellular region of mouse IL-10R.</p> <p>1B1.3a has been widely applied in flow cytometric analyses where the detection of IL-10R was needed. Furthermore, this antibody was also successfully utilised as a blocking agent; one group used it to demonstrate that IL-10 mediates suppressive activity, by targeting its receptor IL-10R with this antibody (Wang et al., 2004). Castro et al. (2000) demonstrated that 1B1.3a is able to make a soluble peptide or protein antigen immunogenic for subsequent Th1 recall responses in a situation when there is an additional signal, such as LPS, activating the immune system. Consequently, this antibody is a hugely promising agent in the potential development of vaccines for immunotherapy. Similarly, Vicari and colleagues (2002) showed that this antibody has an enormous potential as a therapeutic anti-tumour agent when combined with the administration of CpG to stimulate the immune system.</p>
Formulation:	PBS with 0.02% Proclin 300.
Concentration:	lot specific
Conjugation:	Unconjugated
Storage:	Please store at 4°C for up to 3 months. For longer storage, aliquot and store at -20°C. Avoid freeze and thaw cycles.
Stability:	3 years from dispatch.



[View online »](#)

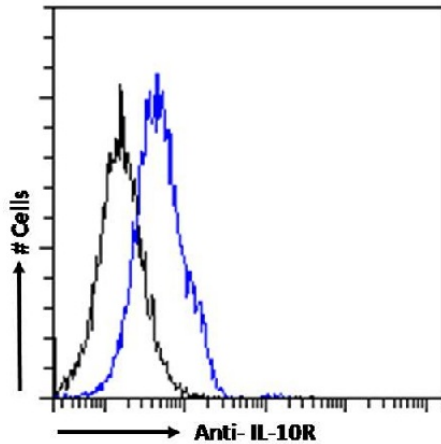
Gene Name: interleukin 10 receptor, alpha

Database Link: [Entrez Gene 16154 Mouse Q61727](#)

Synonyms: CDW210A; HIL-10R; IBD28; IL-10R-A; IL-10R1; IL10R

Note: This chimeric rabbit antibody was made using the variable domain sequences of the original Rat IgG1 format, for improved compatibility with existing reagents, assays and techniques.

### Product images:



Flow cytometry using the Anti-IL-10R antibody 1B1.3a (TA386342). RAW264.7 cells were stained with anti-unknown specificity antibody ([TA385792]; isotype control, black line) or the rabbit IgG version of 1B1.3a (TA386342, blue line) at a dilution of 1:100 for 1h at RT. After washing, the bound antibody was detected using a goat anti-rabbit IgG AlexaFluor® 488 antibody at a dilution of 1:1000 and cells analyzed using a FACSCanto flow-cytometer.