

## Product datasheet for **TA386331**

### Lewis a/b Rabbit Monoclonal Antibody [Clone ID: HEA164]

#### Product data:

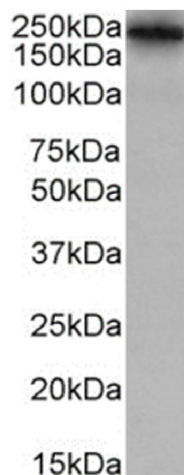
Product Type:	Primary Antibodies
Clone Name:	HEA164
Applications:	FC, IF, IHC, IP, WB
Reactivity:	Human
Host:	Rabbit
Isotype:	IgG, kappa
Clonality:	Monoclonal
Immunogen:	This antibody was raised by immunising mice with human carcinoma cells.
Specificity:	This antibody is specific for Lewis a,b carbohydrate antigens.

This antibody has applications in the detection of normal and neoplastic epithelial cells. This antibody has been shown to react with a glycolipid fraction isolated from colon carcinoma tissue, with no effect of pronase E addition on its reactivity (Moldenhauer et al, 1987). This antibody, when immobilised on the wall of a shear chamber, has been shown to support slow leukocyte rolling (Chen et al, 1997).

Formulation:	PBS with 0.02% Proclin 300.
Concentration:	lot specific
Conjugation:	Unconjugated
Storage:	Please store at 4°C for up to 3 months. For longer storage, aliquot and store at -20°C. Avoid freeze and thaw cycles.
Stability:	3 years from dispatch.
Note:	This chimeric rabbit antibody was made using the variable domain sequences of the original Mouse IgM format, for improved compatibility with existing reagents, assays and techniques.



[View online »](#)

**Product images:**

Western Blot using anti-Lewis a,b antibody HEA164 (TA386331) Human colorectal carcinoma tissue lysate (35 $\mu$ g protein in RIPA buffer) was resolved on a SDS PAGE gel and blots were probed with the chimeric rabbit version of HEA164 (TA386331) at 0.001  $\mu$ g/ml before detection using an anti-rabbit secondary antibody. A primary incubation of 1h was used and protein was detected by chemiluminescence.