

Product datasheet for **TA386321**

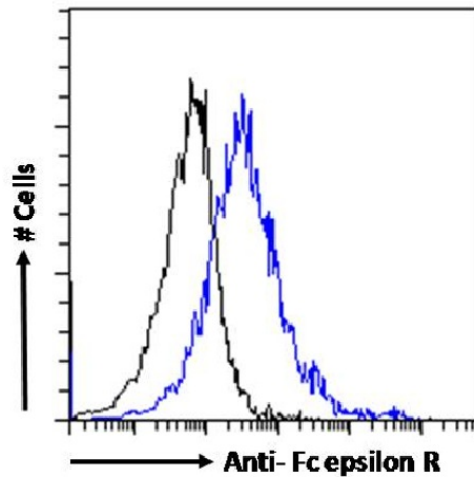
FCER1G Rabbit Monoclonal Antibody [Clone ID: IE7]

Product data:

Product Type:	Primary Antibodies
Clone Name:	IE7
Applications:	IF
Reactivity:	Human
Host:	Rabbit
Isotype:	IgG, kappa
Clonality:	Monoclonal
Immunogen:	Recombinant human protein, N-terminus.
Specificity:	This antibody binds to human Fc epsilon receptor, but does not compete with IgE binding. IE7 binds to human FcεR1a, but does not compete with IgE binding or binding of the antibody IB10 (Ab01396).
Formulation:	PBS with 0.02% Proclin 300.
Concentration:	lot specific
Conjugation:	Unconjugated
Storage:	Please store at 4°C for up to 3 months. For longer storage, aliquot and store at -20°C. Avoid freeze and thaw cycles.
Stability:	3 years from dispatch.
Gene Name:	Fc fragment of IgE receptor Ig
Database Link:	Entrez Gene 2207 Human P30273
Synonyms:	FCRG
Note:	This chimeric rabbit antibody was made using the variable domain sequences of the original Mouse IgG1 format, for improved compatibility with existing reagents, assays and techniques.



[View online »](#)

Product images:

Flow-cytometry using the Anti-Fc epsilon R antibody IE7 (TA386321). U937 cells were stained with anti-Fluorescein IgG antibody (clone 4-4-20; isotype control, black line) or the rabbit IgG version of IE7 (TA386321, blue line) at a dilution of 1:100 for 1h at RT. After washing, bound antibody was detected using a goat anti-rabbit IgG AlexaFluor® 488 antibody at a dilution of 1:1000 and cells analyzed using a FACSCanto flow-cytometer.