

Product datasheet for TA386302

Cd226 Rabbit Monoclonal Antibody [Clone ID: 1000000]

Product data:

Product Type:	Primary Antibodies
Clone Name:	1000000
Applications:	FC
Reactivity:	Mouse
Host:	Rabbit
Isotype:	IgG, kappa
Clonality:	Monoclonal
Immunogen:	This antibody was raised by immunising Lewis and Lou/M rats with the murine Th1 cell clone AE7 and Th1 cell lines derived from 5B6 and DO11.10 TCR transgenic mice, before screening for reactivity with Th1 clones and a lack of reactivity to Th2/Th0 cell lines.
Specificity:	<p>This antibody is specific for murine CD226.</p> <p>The specificity of this antibody for murine CD226 has been confirmed in flow cytometric analysis using 293 cells transfected with CD226 cDNA and untransfected 293 cells (Dardalhon et al, 2005). This antibody has been used in flow cytometry to identify the surface expression pattern of CD226, which is predominantly confined to T cells (Dardalhon et al, 2005; Yasuma et al, 2016), and to detect NK cell CD226 expression and apoptosis (Huang et al, 2011). Immunisation of mice with this antibody inhibits antigen-specific T cell expansion (Dardalhon et al, 2005). Additionally, treatment of experimental autoimmune encephalomyelitis (EAE) mice with this antibody delays the onset and reduces the severity of Th1 cell-mediated autoimmune disease (Dardalhon et al, 2005).</p>
Formulation:	PBS with 0.02% Proclin 300.
Concentration:	lot specific
Conjugation:	Unconjugated
Storage:	Please store at 4°C for up to 3 months. For longer storage, aliquot and store at -20°C. Avoid freeze and thaw cycles.
Stability:	3 years from dispatch.
Gene Name:	CD226 antigen

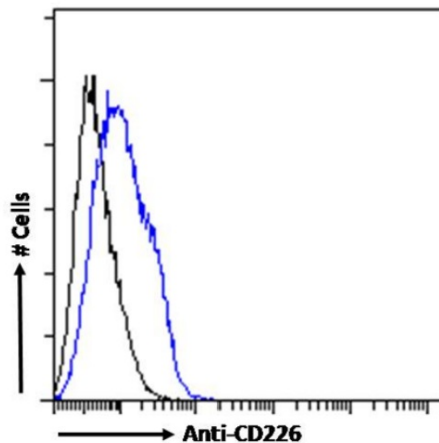

[View online »](#)

Database Link: [Entrez Gene 225825 Mouse Q8K4F0](#)

Synonyms: DNAM-1; DNAM1; PTA1; TLISA1

Note: This chimeric rabbit antibody was made using the variable domain sequences of the original Rat IgG2b format, for improved compatibility with existing reagents, assays and techniques.

Product images:



Flow cytometry using the Anti-CD226 antibody 10E5 (TA386302). Paraformaldehyde fixed mouse splenocytes were stained with anti-unknown specificity antibody ([TA385792]; isotype control, black line) or the rabbit IgG version of 10E5 (TA386302, blue line) at a dilution of 1:100 for 1h at RT. After washing, the bound antibody was detected using a goat anti-rabbit IgG AlexaFluor® 488 antibody at a dilution of 1:1000 and cells analyzed using a FACSCanto flow-cytometer.



Western Blot using anti-CD266 antibody 10E5 (TA386302) Mouse spleen tissue lysates (35µg protein in RIPA buffer) were resolved on a SDS PAGE gel and blots were probed with the chimeric rabbit version of 10E5 (TA386302) at 2 µg/ml before detection using an anti-rabbit secondary antibody. A primary incubation of 1h was used and protein was detected by chemiluminescence.