

Product datasheet for **TA386300**

Pvr Rabbit Monoclonal Antibody [Clone ID: 3F1]

Product data:

Product Type:	Primary Antibodies
Clone Name:	3F1
Applications:	ELISA, FC
Reactivity:	Mouse
Host:	Rabbit
Isotype:	IgG, kappa
Clonality:	Monoclonal
Immunogen:	This antibody was raised by immunising rats with recombinant murine CD155, consisting of the entire ectodomain expressed as a HIS-tagged protein.
Specificity:	This antibody is specific for murine CD155. The binding specificity of this antibody has been confirmed both in ELISA analysis using recombinant murine CD155 (mCD155), and in flow cytometric analysis using HEK293 cells transiently expressing mCD155 (Maier et al, 2007). This antibody has been used in flow cytometry to assess mCD155 expression on lymphocytes and dendritic cells (Maier et al, 2007; Seth et al, 2011). This antibody blocks the interaction of CD155 with its ligands CD96 and CD226 (Qiu et al, 2010). When administered to WT mice, antibody-induced disruption of the CD155-CD226 interaction has been shown to cause CD226 upregulation on CD4+ T cells and CD8+ T cells (Seth et al, 2011). Administration of this antibody has also been shown to stimulate the loss of mature, memory-like CD8+ T cells from the thymus (Seth et al, 2011; Georgiev et al, 2016).
Formulation:	PBS with 0.02% Proclin 300.
Concentration:	lot specific
Conjugation:	Unconjugated
Storage:	Please store at 4°C for up to 3 months. For longer storage, aliquot and store at -20°C. Avoid freeze and thaw cycles.
Stability:	3 years from dispatch.
Gene Name:	poliovirus receptor

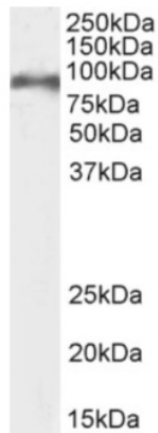

[View online »](#)

Database Link: [Entrez Gene 52118 Mouse Q8K094](#)

Synonyms: CD155; FLJ25946; HVED; Necl-5; NECL5; PVS; Tage4

Note: This chimeric rabbit antibody was made using the variable domain sequences of the original Rat IgG2a format, for improved compatibility with existing reagents, assays and techniques.

Product images:



Western Blot using anti-CD155 antibody 3F1 (TA386300). Mouse thymus lysate (35µg protein in RIPA buffer) was resolved on an SDS PAGE gel and blots probed with the chimeric rabbit IgG version of 3F1 (TA386300) at 0.1 µg/ml before detection using an anti-rabbit secondary antibody. A primary incubation of 1h was used and protein was detected by chemiluminescence.