

## Product datasheet for **TA386294**

### Slc3a2 Rabbit Monoclonal Antibody [Clone ID: RL388]

#### Product data:

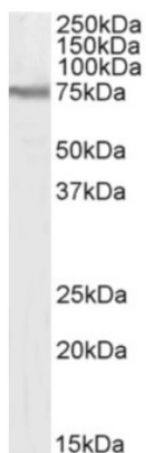
|                |   |
|----------------|---|
| Product Type:  | Primary Antibodies  |
| Clone Name:    | RL388   |
| Applications:  | FC, IP  |
| Reactivity:    | Mouse   |
| Host:          | Rabbit  |
| Isotype:       | IgG, kappa  |
| Clonality:     | Monoclonal  |
| Immunogen:     | This antibody was raised by immunising rats with an IL 2-producing subline of the mouse T lymphoma EL4.   |
| Specificity:   | <p>This antibody recognises murine CD98, a heterodimeric cell surface glycoprotein.</p> <p>This antibody has been used in immunoprecipitation analysis to characterise the CD98 antigen (Luscher et al, 1985) and flow cytometric analysis of CD98 expression by <math>\gamma\delta</math> T cells (Cao et al, 2016). This antibody has been shown to stimulate IL-2 secretion by a T cell lymphoma EL4 subline (EL4-6.1) in the presence of IL-1 (MacDonald et al, 1985). This antibody did not exert stimulatory effects on the parental EL4 line nor a series of ovalbumin-specific T-T hybrids (MacDonald et al, 1985).</p> |
| Formulation:   | PBS with 0.02% Proclin 300.   |
| Concentration: | lot specific  |
| Conjugation:   | Unconjugated  |
| Storage:       | Please store at 4°C for up to 3 months. For longer storage, aliquot and store at -20°C. Avoid freeze and thaw cycles.   |
| Stability:     | 3 years from dispatch.  |
| Gene Name:     | solute carrier family 3 (activators of dibasic and neutral amino acid transport), member 2  |
| Database Link: | <a href="#">Entrez Gene 17254 Mouse P10852</a>  |
| Synonyms:      | 4F2; 4F2HC; 4T2HC; CD98; CD98HC; MDU1; NACAE  |



[View online »](#)

**Note:** This chimeric rabbit antibody was made using the variable domain sequences of the original Rat IgG2b format, for improved compatibility with existing reagents, assays and techniques.

**Product images:**



Western Blot using anti-CD98 antibody [RL388] (TA386294). Mouse fetal liver lysate (35µg protein in RIPA buffer) was resolved on an SDS PAGE gel and blots probed with the chimeric rabbit IgG version of [RL388] (TA386294) at 0.05 µg/ml before detection using an anti-rabbit secondary antibody. A primary incubation of 1h was used and protein was detected by chemiluminescence.