

Product datasheet for **TA386293**

IL17a Rabbit Monoclonal Antibody [Clone ID: MM17F3]

Product data:

Product Type:	Primary Antibodies
Clone Name:	MM17F3
Applications:	BI, ELISA
Reactivity:	Mouse
Host:	Rabbit
Isotype:	IgG, kappa
Clonality:	Monoclonal
Immunogen:	This antibody was raised by immunising C57Bl/6 mice with IL-17A cross-linked to ovalbumin to generate a highly immunogenic complex.
Specificity:	<p>This antibody is highly specific for murine IL-17A; in ELISA analysis, no cross-reactivity with IL-17B, IL-17C, IL-17D, IL-17E or IL-17F was observed.</p> <p>The specificity of this antibody has been confirmed in ELISA analysis (Uyttenhove et al, 2006). This antibody inhibits IL-17A-induced IL-6 production by a CI1D fibroblastic cell line in vitro (Uyttenhove et al, 2006). This antibody has been shown to prevent experimental autoimmune encephalomyelitis (EAE) disease development in vivo (Uyttenhove et al, 2006), as well as protecting C57Bl/6 mice from myelin oligodendrocyte glycoprotein (MOG)-induced EAE (Uyttenhove et al, 2007). Additionally, administration of this antibody inhibits collagen-induced arthritis (CIA) in IFN-γ receptor knockout mice (Kelchtermans et al, 2009).</p>
Formulation:	PBS with 0.02% Proclin 300.
Concentration:	lot specific
Conjugation:	Unconjugated
Storage:	Please store at 4°C for up to 3 months. For longer storage, aliquot and store at -20°C. Avoid freeze and thaw cycles.
Stability:	3 years from dispatch.
Gene Name:	interleukin 17A
Database Link:	Entrez Gene 16171 Mouse Q62386

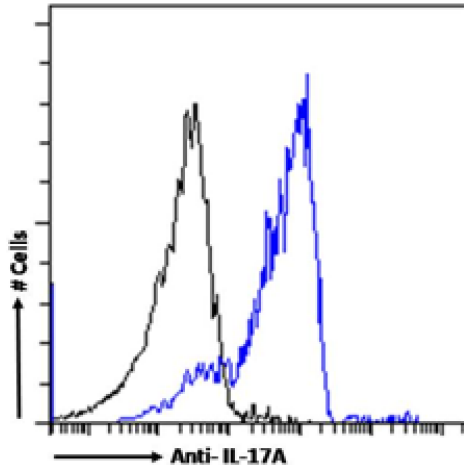


[View online »](#)

Synonyms: CTLA-8; CTLA8; IL-17; IL-17A; IL17

Note: This chimeric rabbit antibody was made using the variable domain sequences of the original Mouse IgG1 format, for improved compatibility with existing reagents, assays and techniques.

Product images:



Flow-cytometry using the Anti-IL-17A antibody MM17F3 (TA386293). Mouse splenocytes were stimulated with PMA and Ionomycin in presence of Monensin for 4 hours. The cells were fixed using 2% PFA, permeabilized using 0.5% Triton and stained with anti-Fluorescein IgG antibody (clone 4-4-20; isotype control, black line) or the rabbit IgG version of MM17F3 (TA386293, blue line) at a dilution of 1:100 for 1h at RT. After washing, bound antibody was detected using a goat anti-mouse IgG AlexaFluor® 488 antibody at a dilution of 1:1000 and cells were analyzed using a FACSCanto flow-cytometer.