

Product datasheet for **TA386289**

IL9R Rabbit Monoclonal Antibody [Clone ID: AH9R2]

Product data:

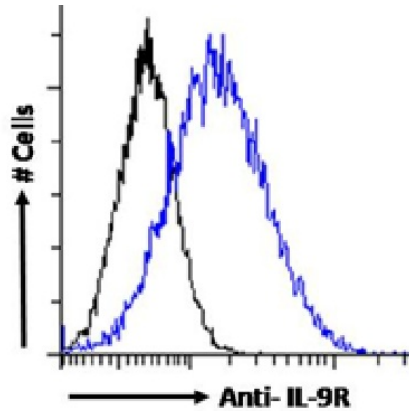
Product Type:	Primary Antibodies
Clone Name:	AH9R2
Applications:	Bl, IP
Reactivity:	Human
Host:	Rabbit
Isotype:	IgG, kappa
Clonality:	Monoclonal
Immunogen:	This antibody was raised by immunising DBA/2 mice with P815 mastocytoma cells transfected with human IL-9R cDNA.
Specificity:	This antibody binds specifically to the human IL-9 receptor alpha chain. This antibody has been used to immunoprecipitate human IL-9R expressed by murine BW5147 cells transfected with hIL-9R-encoding cDNA (Demoulin et al, 1996). This antibody binds to and blocks the human IL-9Ra, and displays intermediate inhibitory activity; in a TS1H9RA3 proliferation assay, half-maximal inhibition of 100 pg/ml human IL-9 requires 10 mg/ml of this antibody (de Smedt et al, 2000). Equally, treatment with this antibody partially reduces the cellularity of human thymocytes in chimeric human-mouse FTOC, with no effect on murine thymocytes (de Smedt et al, 2000).
Formulation:	PBS with 0.02% Proclin 300.
Concentration:	lot specific
Conjugation:	Unconjugated
Storage:	Please store at 4°C for up to 3 months. For longer storage, aliquot and store at -20°C. Avoid freeze and thaw cycles.
Stability:	3 years from dispatch.
Gene Name:	interleukin 9 receptor
Database Link:	Entrez Gene 3581 Human Q01113
Synonyms:	CD129; IL-9R



[View online »](#)

Note: This chimeric rabbit antibody was made using the variable domain sequences of the original Mouse IgG2b format, for improved compatibility with existing reagents, assays and techniques.

Product images:



Flow-cytometry using the Anti-IL-9R antibody AH9R2 (TA386289). Jurkat cells were fixed using 2% PFA, permeabilised using 0.5% Triton and stained with anti-Fluorescein IgG antibody (clone 4-4-20; isotype control, black line) or the rabbit IgG1 version of HB-8592 (TA386289, blue line) at a dilution of 1:100 for 1h at RT. After washing, bound antibody was detected using a goat anti-mouse IgG AlexaFluor® 488 antibody at a dilution of 1:1000 and cells analyzed using a FACSCanto flow-cytometer.