

Product datasheet for **TA386284**

IL9 Rabbit Monoclonal Antibody [Clone ID: MH9A4]

Product data:

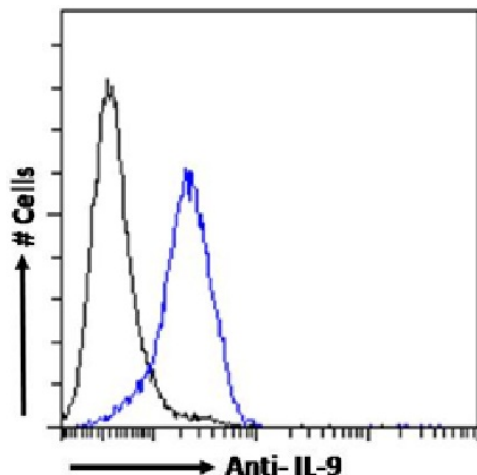
Product Type:	Primary Antibodies
Clone Name:	MH9A4
Applications:	ELISA, FC
Reactivity:	Human
Host:	Rabbit
Isotype:	IgG, kappa
Clonality:	Monoclonal
Immunogen:	This antibody was raised by immunising C57Bl/6 mice with human IL-9 coupled to ovalbumin.
Specificity:	This antibody is specific for human IL-9.

This antibody has been used in ELISA analysis to detect human IL-9 in allergen-stimulated peripheral blood mononuclear cell supernatants (Jenmalm et al, 2001) and differentiated human T helper cell supernatants (Chang et al, 2010). This antibody, when fluorochrome-conjugated, has also been used to achieve intracellular IL-9 staining, analysed using flow cytometry (Chang et al, 2010; Beriou et al, 2010; Lozano et al, 2013).

Formulation:	PBS with 0.02% Proclin 300.
Concentration:	lot specific
Conjugation:	Unconjugated
Storage:	Please store at 4°C for up to 3 months. For longer storage, aliquot and store at -20°C. Avoid freeze and thaw cycles.
Stability:	3 years from dispatch.
Gene Name:	interleukin 9
Database Link:	Entrez Gene 3578 Human P15248
Synonyms:	HP40; IL-9; P40
Note:	This chimeric rabbit antibody was made using the variable domain sequences of the original Mouse IgG2b format, for improved compatibility with existing reagents, assays and techniques.



[View online »](#)

Product images:

Flow-cytometry using the Anti-IL-9 antibody MH9A4 (TA386284). Human peripheral blood leukocytes were rested for 4 hours. The cells were fixed using 2% PFA, permeabilized using 0.5% Triton and stained with anti-Fluorescein IgG antibody (clone 4-4-20; isotype control, black line) or the rabbit IgG version of MH9A4 (TA386284, blue line) at a dilution of 1:100 for 1h at RT. After washing, bound antibody was detected using a goat anti-mouse IgG AlexaFluor® 488 antibody at a dilution of 1:1000 and cells were analyzed using a FACSCanto flow-cytometer.