

Product datasheet for **TA386280**

Il6ra Rabbit Monoclonal Antibody [Clone ID: D7715A7]

Product data:

Product Type:	Primary Antibodies
Clone Name:	D7715A7
Applications:	BI, FC
Reactivity:	Mouse
Host:	Rabbit
Isotype:	IgG, kappa
Clonality:	Monoclonal
Immunogen:	This antibody was raised by immunising Lewis rats with OKT4 cells.
Specificity:	This antibody is specific for murine IL-6R.

This antibody binds to IL-6R-positive cells, and blocks IL-6 binding (Vink et al, 1990; Coulie et al, 1990). This antibody is able to inhibit the growth of IL6-dependent plasmacytoma T1033C2 in vitro (Coulie et al, 1990). Administration of this antibody to mice prior to challenge with T1033C2 resulted in a protection rate of 60% and prolonged survival in tumour-bearing mice (Vink et al, 1990). This antibody has been used in flow cytometry to assess IL-6Ra expression (Hoge et al, 2013). When added to dendritic cells subject to CD40 activation in vitro, this antibody neutralises IL-6 and ablates the effect of CD40 activation (Grohmann et al, 2001).

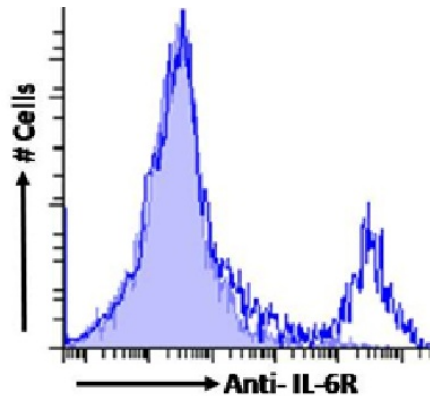
Formulation:	PBS with 0.02% Proclin 300.
Concentration:	lot specific
Conjugation:	Unconjugated
Storage:	Please store at 4°C for up to 3 months. For longer storage, aliquot and store at -20°C. Avoid freeze and thaw cycles.
Stability:	3 years from dispatch.
Gene Name:	interleukin 6 receptor, alpha
Database Link:	Entrez Gene 16194 Mouse P22272
Synonyms:	CD126; IL-6R; Il6r



[View online »](#)

Note: This chimeric rabbit antibody was made using the variable domain sequences of the original Rat IgG2b format, for improved compatibility with existing reagents, assays and techniques.

Product images:



Flow-cytometry using the Anti-IL-6R antibody D7715A7 (TA386280). Mouse splenocytes were stained with anti-Fluorescein IgG antibody (clone 4-4-20; isotype control, shaded line) or the rabbit IgG version of D7715A7 (TA386280, blue line) at a dilution of 1:100 for 1h at RT. After washing, bound antibody was detected using a goat anti-rabbit IgG AlexaFluor® 488 antibody at a dilution of 1:1000 and cells analyzed using a FACSCanto flow-cytometer.