

Product datasheet for **TA386277**

CD11a (ITGAL) Rabbit Monoclonal Antibody [Clone ID: MHM24]

Product data:

Product Type:	Primary Antibodies
Clone Name:	MHM24
Applications:	Inhib
Reactivity:	Human
Host:	Rabbit
Isotype:	IgG, kappa
Clonality:	Monoclonal
Immunogen:	Spleen cells from BALB/c mice immunised with EBV-transformed human lymphoblastoid cells were fused with P3-NSUIAg4.1 myeloma cells and the resulting hybridomas were screened for antibody production by a radioimmunoassay on T and B cell lines.
Specificity:	<p>MHM24 binds to the CD11a subunit of lymphocyte function-associated antigen. It binds to both the high- and low-affinity forms of the antigen.</p> <p>Cytofluorography was used to show the binding of MHM24 to peripheral blood lymphocytes, with 97.3% of cells stained by MHM24 (Hildreth et al, 1983). In inhibition experiments, MHM24 inhibited T cell-mediated lysis of virus-infected cells (Hildreth et al, 1983). Additionally, MHM24 inhibited NK cell-mediated lysis (Hildreth et al, 1983). Flow cytometry showed MHM24 exhibits non-selective binding to high-affinity and low-affinity forms of LFA-1 (Huang et al, 2006). Murine MHM24 was humanised and shown to prevent adhesion of human T cells to human keratinocytes and the proliferation of T cells in response to nonautologous leukocytes (Werther et al, 1996).</p>
Formulation:	PBS with 0.02% Proclin 300.
Concentration:	lot specific
Conjugation:	Unconjugated
Storage:	Please store at 4°C for up to 3 months. For longer storage, aliquot and store at -20°C. Avoid freeze and thaw cycles.
Stability:	3 years from dispatch.
Gene Name:	integrin subunit alpha L



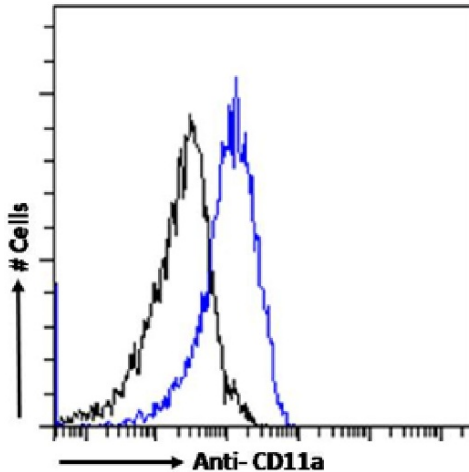
[View online »](#)

Database Link: [Entrez Gene 3683 Human P20701](#)

Synonyms: CD11A; LFA-1; LFA-1A; LFA1A

Note: This chimeric rabbit antibody was made using the variable domain sequences of the original Mouse IgG format, for improved compatibility with existing reagents, assays and techniques.

Product images:



Flow-cytometry using the anti-CD11a antibody MHM24 (TA386277). Jurkat cells were stained with anti-Fluorescein IgG antibody (clone 4-4-20; isotype control, black line) or the rabbit IgG1 version of MHM24 (TA386277, blue line) at a dilution of 1:100 for 1h at RT. After washing, bound antibody was detected using a goat anti-mouse IgG AlexaFluor® 488 antibody at a dilution of 1:1000 and cells analyzed using a FACSCanto flow-cytometer.