

Product datasheet for **TA386273**

RAGE (AGER) Rabbit Monoclonal Antibody [Clone ID: 2A11]

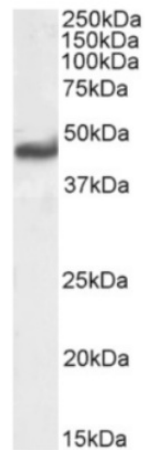
Product data:

Product Type:	Primary Antibodies
Clone Name:	2A11
Applications:	ELISA, FC, IF, IHC, WB
Reactivity:	Human
Host:	Rabbit
Isotype:	IgG, kappa
Clonality:	Monoclonal
Immunogen:	Human RAGE protein.
Specificity:	2A11 is specific for the V-domain of human advanced glycosylation end product-specific receptor. It recognises both the glycosylated and non-glycosylated forms. ELISA confirmed the specificity of 2A11 for the V-domain of RAGE, with a binding affinity (Kd) of 7.6 nM. ELISA was also used to confirm that the binding of 2A11 to RAGE is glycosylation independent. In SPR experiments the Kd of 2A11 binding to RAGE was determined as 0.38 nM. Flow cytometry and immunochemistry were used to visualise the binding of 2A11 to HEK-RAGE cells.
Formulation:	PBS with 0.02% Proclin 300.
Concentration:	lot specific
Conjugation:	Unconjugated
Storage:	Please store at 4°C for up to 3 months. For longer storage, aliquot and store at -20°C. Avoid freeze and thaw cycles.
Stability:	3 years from dispatch.
Gene Name:	advanced glycosylation end product-specific receptor
Database Link:	Entrez Gene 177 Human Q15109
Synonyms:	MGC22357; RAGE
Note:	This chimeric rabbit antibody was made using the variable domain sequences of the original Mouse IgG1 format, for improved compatibility with existing reagents, assays and techniques.

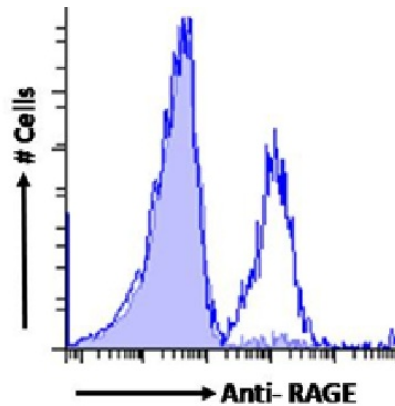


[View online »](#)

Product images:



Western Blot using anti-RAGE antibody 2A11 (TA386273). Human lung lysate (35µg protein in RIPA buffer) was resolved on an SDS PAGE gel and blots probed with the chimeric rabbit IgG version of 2A11 (TA386273) at 0.03 µg/ml before detection using an anti-rabbit secondary antibody. A primary incubation of 1h was used and protein was detected by chemiluminescence.



Flow-cytometry using the Anti-RAGE antibody 2A11 (TA386273). A549 cells were stained with anti-Fluorescein IgG antibody (clone 4-4-20; isotype control, shaded line) or the rabbit IgG version of 2A11 (TA386273, blue line) at a dilution of 1:100 for 1h at RT. After washing, bound antibody was detected using a goat anti-rabbit IgG AlexaFluor® 488 antibody at a dilution of 1:1000 and cells analyzed using a FACSCanto flow-cytometer.