

## Product datasheet for **TA386267**

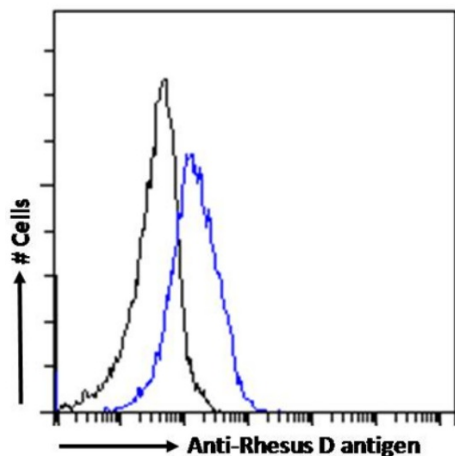
### RHD Rabbit Monoclonal Antibody [Clone ID: D7C2]

#### Product data:

Product Type:	Primary Antibodies
Clone Name:	D7C2
Applications:	FC
Reactivity:	Human
Host:	Rabbit
Clonality:	Monoclonal
Immunogen:	A Rh- volunteer blood donor (r/r) was injected with 5ml of Rh+ erythrocytes (R1/r) and the peripheral lymphocytes were isolated and transformed with 1 ml of culture supernatant of the EBV marmoset B96-8 cell line.
Specificity:	<p>FC confirmed the binding of D7C2 to Rh D+ red cells in artificial mixtures (Edelman et al, 1997). The ADCC of D7C2 showed a percentage of 93% lysis (Edelman et al, 1997). D7C2 has been expressed recombinantly using a baculovirus-insect cell expression system (Edelman et al, 1997).</p>
Formulation:	PBS with 0.02% Proclin 300.
Concentration:	lot specific
Conjugation:	Unconjugated
Storage:	Please store at 4°C for up to 3 months. For longer storage, aliquot and store at -20°C. Avoid freeze and thaw cycles.
Stability:	3 years from dispatch.
Gene Name:	Rh blood group D antigen
Database Link:	<a href="#">Entrez Gene 6007 Human Q02161</a>
Synonyms:	CD240D; DIIIc; MGC165007; RH; Rh4; RH30; Rh30a; RHCED; RhDCw; RHDel; RHDVA(TT); RhII; RhK562-II; RhPI; RHPII; RHXIII
Note:	This chimeric rabbit antibody was made using the variable domain sequences of the original Human IgM format, for improved compatibility with existing reagents, assays and techniques.



[View online »](#)

**Product images:**

Flow cytometry using the Anti-Rhesus D antigen antibody D7C2 (TA386267). Paraformaldehyde fixed K562 cells were stained with anti-unknown specificity antibody ([TA385792]; isotype control, black line) or the rabbit IgG version of D7C2 (TA386267, blue line) at a dilution of 1:100 for 1h at RT. After washing, the bound antibody was detected using a goat anti-rabbit IgG AlexaFluor® 488 antibody at a dilution of 1:1000 and cells analyzed using a FACSCanto flow-cytometer.