

Product datasheet for **TA386251**

IL5 Rabbit Monoclonal Antibody [Clone ID: 2000]

Product data:

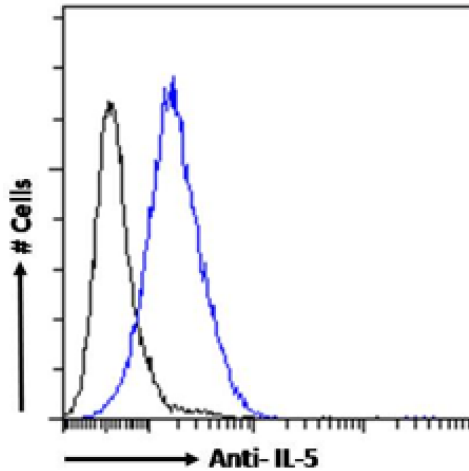
Product Type:	Primary Antibodies
Clone Name:	2000
Applications:	ELISA, Neutralize
Reactivity:	Human
Host:	Rabbit
Isotype:	IgG, kappa
Clonality:	Monoclonal
Immunogen:	This antibody was raised by immunising CAF1 mice with human recombinant IL-5.
Specificity:	This antibody is specific for human rIL-5, and does not cross-react with human rIL-1 α , rIL-1 β , rIL-4, rIL-8, rM-CSF, or rTGF- α . This antibody has been shown to inhibit the binding of human rIL-5 to the alpha chain of the IL-5 receptor (Ames et al, 1995). This antibody inhibits the proliferation of murine B13 cells in response to human IL-5 (Ames et al, 1995). Neutralising antibodies against IL-5 represent a potential therapeutic strategy for the treatment of eosinophilia. The specificity of this antibody for human IL-5 has been confirmed in ELISA analysis (Ames et al, 1995).
Formulation:	PBS with 0.02% Proclin 300.
Concentration:	lot specific
Conjugation:	Unconjugated
Storage:	Please store at 4°C for up to 3 months. For longer storage, aliquot and store at -20°C. Avoid freeze and thaw cycles.
Stability:	3 years from dispatch.
Gene Name:	interleukin 5
Database Link:	Entrez Gene 3567 Human C9IQP9
Synonyms:	EDF; IL-5; interleukin-5; TRF



[View online »](#)

Note: This chimeric rabbit antibody was made using the variable domain sequences of the original Mouse IgG2a format, for improved compatibility with existing reagents, assays and techniques.

Product images:



Flow-cytometry using the Anti-IL-5 antibody 2E3 (TA386251). Human peripheral blood leukocytes were rested for 4 hours. The cells were fixed using 2% PFA, permeabilized using 0.5% Triton and stained with anti-Fluorescein IgG antibody (clone 4-4-20; isotype control, black line) or the rabbit IgG version of 2E3 (TA386251, blue line) at a dilution of 1:100 for 1h at RT. After washing, bound antibody was detected using a goat anti-mouse IgG AlexaFluor® 488 antibody at a dilution of 1:1000 and cells were analyzed using a FACSCanto flow-cytometer.