

## Product datasheet for TA386236

### Lgals9 Rabbit Monoclonal Antibody [Clone ID: RG9-35]

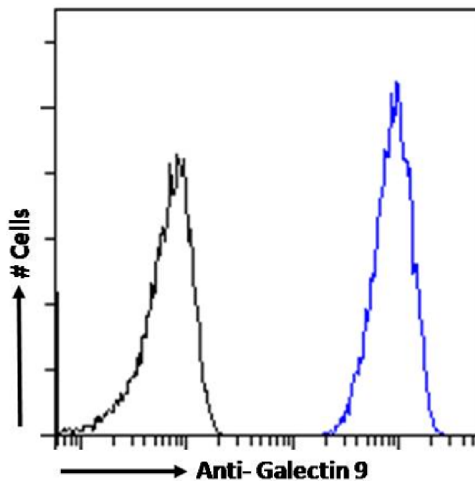
#### Product data:

Product Type:	Primary Antibodies
Clone Name:	RG9-35
Applications:	BI, FC, FN
Reactivity:	Mouse
Host:	Rabbit
Isotype:	IgG, kappa
Clonality:	Monoclonal
Immunogen:	This antibody was raised by immunising rats with recombinant mouse galectin-9.
Specificity:	<p>This antibody is specific for murine galectin-9, a 40 kDa S-type lectin that is expressed by various cell types including lymphocytes, thymocytes, macrophages, dendritic cells, astrocytes, mast cells, eosinophils, fibroblasts, epithelial cells, and endothelial cells. Galectin-9 binds to <math>\beta</math>-galactosides and can serve as a ligand for TIM-3 (CD366). The protein is implicated in both innate and adaptive immune responses specifically, induction of cytokine secretion by macrophages, bactericidal functions, promotion of dendritic cell maturation, regulatory T cell expansion, and negative regulation of Th1, Th17, NK, and cytotoxic T cells.</p> <p>When this antibody was first generated and characterised, it was shown to bind with galectin-9 but not with either galectin-1 or galectin-3, and to be capable of blocking Tim-3-Fc binding to galectin-9 and inhibiting galectin-9-induced Th1 cell death in vitro (Fukushima et al, 2008). This antibody has been used in FACS analyses, for instance, to describe a novel mechanism where Tim-3 binds HMGB-1 on virus-specific CD8<sup>+</sup> Treg cells suppressing proliferation of CD8<sup>+</sup> T effector cells during acute adenoviral infection (Dolina et al, 2014), and to indicate a crucial role for Tim-3 in phagocytosis of apoptotic cells and cross-presentation (Nakayama et al, 2009). In addition, this antibody has been used in vivo to study the roles of galectin-9 in the development of experimental allergic conjunctivitis in mice (Fukushima et al, 2008) and to demonstrate that constitutive expression of Gal-9 plays an immunosuppressive role in corneal allografts (Shimmura-Tomita et al, 2013).</p>
Formulation:	PBS with 0.02% Proclin 300.
Concentration:	lot specific
Conjugation:	Unconjugated


[View online »](#)

<b>Storage:</b>	Please store at 4°C for up to 3 months. For longer storage, aliquot and store at -20°C. Avoid freeze and thaw cycles.
<b>Stability:</b>	3 years from dispatch.
<b>Gene Name:</b>	lectin, galactose binding, soluble 9
<b>Database Link:</b>	<a href="#">Entrez Gene 16859 Mouse O08573</a>
<b>Synonyms:</b>	ecalectin; galectin-9; HOM-HD-21; HUAT; LGALS9A; MGC117375; MGC125973; MGC125974
<b>Note:</b>	This chimeric rabbit antibody was made using the variable domain sequences of the original Rat IgG2a format, for improved compatibility with existing reagents, assays and techniques.

### Product images:



Flow cytometry using the anti-Galectin 9 antibody RG9-35 (TA386236). NIH3T3 cells were fixed using 2% PFA and stained with anti-unknown specificity antibody ([TA385792]; isotype control, black line) or the rabbit IgG1 version of RG9-35 (TA386236, blue line) at a dilution of 1:100 for 1h at RT. After washing, the bound antibody was detected using a goat anti-rabbit IgG AlexaFluor® 488 antibody at a dilution of 1:1000 and cells analyzed using a FACSCanto flow-cytometer.