

## Product datasheet for **TA386212**

### **Ccr12 Rabbit Monoclonal Antibody [Clone ID: BZ5B8]**

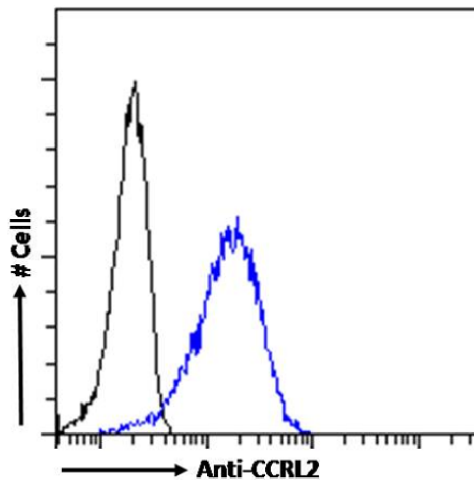
#### **Product data:**

<b>Product Type:</b>	Primary Antibodies
<b>Clone Name:</b>	BZ5B8
<b>Applications:</b>	ELISA, FC, FN, ICC, IHC, IP, WB
<b>Reactivity:</b>	Mouse
<b>Host:</b>	Rabbit
<b>Isotype:</b>	IgG, kappa
<b>Clonality:</b>	Monoclonal
<b>Immunogen:</b>	This antibody was raised by immunising Wistar Furth rats with the mCCRL2 peptide/KLH conjugate. The immunizing amino-terminal mCCRL2 peptide with the sequence NH <sub>2</sub> -MDNYTVAPDDEYDVLILDDYLDNSC-COOH, corresponding to residues 1–24 of mCCRL2, with a nonnative carboxyl-terminal cysteine to facilitate conjugation to keyhole limpet hemocyanin (KLH).
<b>Specificity:</b>	<p>This antibody is specific for murine CCRL2 (formerly known as L-CCR), which is expressed on mast cells, activated macrophages, and endothelial cells. This receptor binds the leukocyte chemoattractant chemerin without triggering classical GPCR signaling, providing a specific mechanism for local enrichment of chemerin at inflammatory sites. CCRL2 presents active chemerin to leukocytes expressing the chemoattractant receptor CMKLR1/Chemr23. Chemerin can block anti-CCRL2 antibody binding.</p> <p>This antibody has been used in various FACS analyses, for instance, to confirm that it is only specific to mCCRL2-hemagglutinin (HA)/L1.2 transfectants and that peritoneal macrophages treated with LPS, TNF<math>\alpha</math>, IFN-<math>\gamma</math>, or poly:IC up-regulate mCCRL2 protein expression (Zabel et al., 2008). Of note, this antibody binding to mouse peritoneal mast cells could be inhibited by chemerin, a protein ligand for signaling receptor CMKLR1 (Zabel et al., 2008). This anti-CCRL2 antibody can be used in wide variety of assays to study leukocytes and immune response. For example, this antibody has been used to examine the expression, regulation, and function of atypical chemerin receptor CCRL2 on endothelial cells (Monnier et al., 2012) and to delineate how the chemoattractant chemerin suppresses melanoma by recruiting natural killer cell antitumor defenses (Pachynski et al., 2012).</p>
<b>Formulation:</b>	PBS with 0.02% Proclin 300.

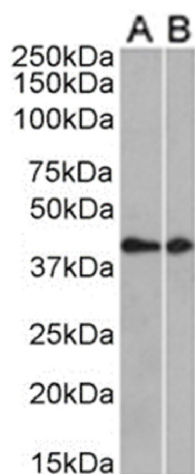

[View online »](#)

<b>Concentration:</b>	lot specific
<b>Conjugation:</b>	Unconjugated
<b>Storage:</b>	Please store at 4°C for up to 3 months. For longer storage, aliquot and store at -20°C. Avoid freeze and thaw cycles.
<b>Stability:</b>	3 years from dispatch.
<b>Gene Name:</b>	chemokine (C-C motif) receptor-like 2
<b>Database Link:</b>	<a href="#">Entrez Gene 54199 Mouse O35457</a>
<b>Synonyms:</b>	CCR6; CCR11; CKRX; CRAM; CRAM-A; CRAM-B; FLJ55815; HCR; MGC34104; MGC116710; OTTHUMP00000209785; OTTHUMP00000209786
<b>Note:</b>	This chimeric rabbit antibody was made using the variable domain sequences of the original Rat IgG2a format, for improved compatibility with existing reagents, assays and techniques.

### Product images:



Flow cytometry using the anti-CCRL2 antibody BZ5B8 (TA386212). RAW264.7 cells were fixed using 2% PFA and stained with anti-unknown specificity antibody ([TA385792]; isotype control, black line) or the rabbit IgG1 version of BZ5B8 (TA386212, blue line) at a dilution of 1:100 for 1h at RT. After washing, the bound antibody was detected using a goat anti-rabbit IgG AlexaFluor® 488 antibody at a dilution of 1:1000 and cells analyzed using a FACSCanto flow-cytometer.



Western Blot using anti-CCRL2 antibody (TA386212) Mouse thymus (A) and mouse brain (B) tissue lysates (35µg protein in RIPA buffer) were resolved on a SDS PAGE gel and blots were probed with the chimeric rabbit version of CCRL2 (TA386212) at 0.5 µg/ml, before detection using an anti-rabbit secondary antibody. A primary incubation of 1h was used and protein was detected by chemiluminescence.