

Product datasheet for **TA386208**

Ptprc Rabbit Monoclonal Antibody [Clone ID: RA3-6B2]

Product data:

Product Type:	Primary Antibodies
Clone Name:	RA3-6B2
Applications:	FC, IF, IHC
Reactivity:	Mouse
Host:	Rabbit
Isotype:	IgG, kappa
Clonality:	Monoclonal
Immunogen:	This antibody was raised in Lou-M rats using a popliteal lymph node immunisation and fusion protocol as described by Martiniello et al (1994)
Specificity:	<p>This antibody is specific for murine CD45R antigen which is expressed on B lymphocytes throughout their development from early pro-B stages onwards and is down-regulated upon terminal differentiation to plasma cells. Apart from B cells, CD45R is expressed on a small subset of dendritic cells (plasmacytoid dendritic cells). The CD45R mAb clone RA3-6B2 specifically recognizes the exon A-restricted isoform of mouse CD45.</p> <p>This antibody has been used in FACS analyses, immunoprecipitation, immunoblotting, and immunohistochemistry in various studies, such as to understand the role of PD-1 in maintaining islet-specific tolerance in type 1 diabetes (Martinov et al, 2016), to investigate how Staphylococcus aureus enterotoxins spread systemically and trigger inflammatory cascades (Svedova et al, 2016), to highlight the physiologic importance of cell-type specific balancing of AhR/AhRR expression in response to microbial, nutritional and other environmental stimuli (Brandstätter et al, 2016), and to examine the role of FBXW7 in suppression of cancer metastasis in a non-cell-autonomous manner (Yumimoto et al, 2015).</p>
Formulation:	PBS with 0.02% Proclin 300.
Concentration:	lot specific
Conjugation:	Unconjugated
Storage:	Please store at 4°C for up to 3 months. For longer storage, aliquot and store at -20°C. Avoid freeze and thaw cycles.
Stability:	3 years from dispatch.



[View online »](#)

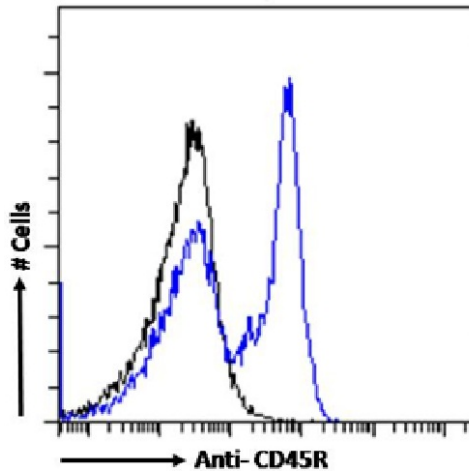
Gene Name: protein tyrosine phosphatase, receptor type, C

Database Link: [Entrez Gene 19264 Mouse P06800](#)

Synonyms: B220; CD45; CD45R; glycoprotein; GP180; L-CA; LCA; LY5; T200

Note: This chimeric rabbit antibody was made using the variable domain sequences of the original Rat IgG2a format, for improved compatibility with existing reagents, assays and techniques.

Product images:



Flow-cytometry using the anti-CD45R antibody RA3-6B2 (TA386208). Mouse splenocytes were stained with anti-Fluorescein IgG antibody (clone 4-4-20; isotype control, black line) or the rabbit IgG1 version of RA3-6B2 (TA386208, blue line) at a dilution of 1:100 for 1h at RT. After washing, bound antibody was detected using a goat anti-mouse IgG AlexaFluor® 488 antibody at a dilution of 1:1000 and cells analyzed using a FACSCanto flow-cytometer.