

Product datasheet for **TA386206**

Ly6g Rabbit Monoclonal Antibody [Clone ID: RB6-8C5]

Product data:

Product Type: Primary Antibodies

Clone Name: RB6-8C5

Applications: FC, IHC, WB

Reactivity: Mouse

Host: Rabbit

Isotype: IgG, kappa

Clonality: Monoclonal

Immunogen: This antibody was raised in Lou-M rats using a popliteal lymph node immunisation and fusion protocol as described by Martiniello et al (1994)

Specificity: This antibody is specific for murine Ly6G, a 21-25 kDa glycosylphosphatidylinositol (GPI)-linked protein expressed by the myeloid-derived cells in a tightly developmentally-regulated manner in the bone marrow. Monocytes express Ly6G transiently during bone marrow development, while Ly6G expression in granulocytes and peripheral neutrophils directly correlates with the cell's level of differentiation and maturation. This hallmark makes Ly6G a good marker for these particular cell populations. Ly6G has also been implicated in the development of antitumor responses.

This antibody has been used in FACS analyses, immunoprecipitation, immunoblotting, and immunohistochemistry in various studies, such as to elucidate the origin and roles of macrophages in the post-myocardial infarction remodelling (Sager et al, 2016), to investigate the pathogenesis of primary biliary cirrhosis (Yang et al, 2016), to confirm the phenotypic dynamics of microglial and monocyte-derived cells in glioblastoma-bearing mice (Ricard et al, 2016), and to highlight an important ageing-related defect in the mucosal immune system's ability to sample luminal antigens (Kobayashi et al, 2013). This antibody has also been used *in vivo*, for example, to deplete Treg cells when delineating the paralleled developments of inflammation and immunosuppression in tumor microenvironment (Yang et al, 2010), or to deplete neutrophils when underpinning a causal role for neutrophils in severe asthma (Wilson et al, 2009).

Formulation: PBS with 0.02% Proclin 300.

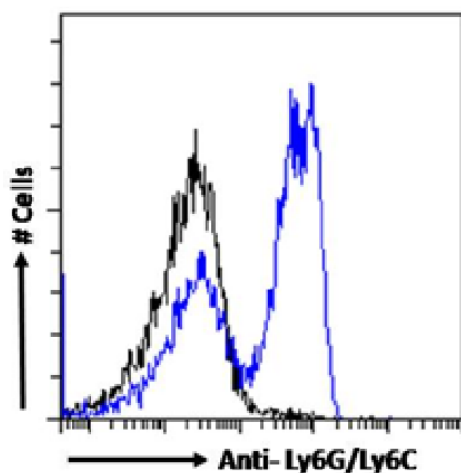
Concentration: lot specific



[View online »](#)

Conjugation:	Unconjugated
Storage:	Please store at 4°C for up to 3 months. For longer storage, aliquot and store at -20°C. Avoid freeze and thaw cycles.
Stability:	3 years from dispatch.
Gene Name:	lymphocyte antigen 6 complex, locus G
Database Link:	Entrez Gene 546644 Mouse P35461
Synonyms:	Ly6g
Note:	This chimeric rabbit antibody was made using the variable domain sequences of the original Rat IgG2a format, for improved compatibility with existing reagents, assays and techniques.

Product images:



Flow-cytometry using the Anti-Ly6G/Ly6C antibody RB6-8C5 (TA386206). Mouse splenocytes were stained with anti-Fluorescein IgG antibody (clone 4-4-20; isotype control, black line) or the rabbit IgG version of RB6-8C5 (TA386206, blue line) at a dilution of 1:100 for 1h at RT. After washing, bound antibody was detected using a goat anti-rabbit IgG AlexaFluor® 488 antibody at a dilution of 1:1000 and cells analyzed using a FACSCanto flow-cytometer.