

Product datasheet for **TA386187**

IL16 Rabbit Monoclonal Antibody [Clone ID: 14.1]

Product data:

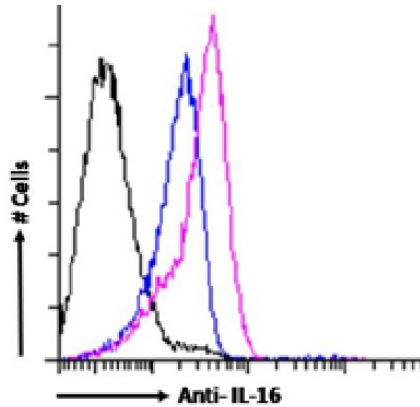
Product Type:	Primary Antibodies
Clone Name:	14.1
Applications:	ELISA, FC, IHC, WB
Reactivity:	Human
Host:	Rabbit
Isotype:	IgG, kappa
Clonality:	Monoclonal
Immunogen:	The antibody was raised against IL-16 using a synthetic peptide corresponding to the predicted amino acid sequence of a hydrophilic region of IL-16, conjugated to keyhole limpet hemocyanin.
Specificity:	The antibody is specific for IL-16. The antibody has been used in Western blot analysis to detect IL-16. It has been used in ELISA-type binding assays. The antibody has been used to stain endogenous IL-16 in sheets from murine ear skin after intradermal injection of TNF- α , and in flow cytometry to detect IL-16 on epidermal cells and emigrated cutaneous DC (Stoitzner et al, 2001).
Formulation:	PBS with 0.02% Proclin 300.
Concentration:	lot specific
Conjugation:	Unconjugated
Storage:	Please store at 4°C for up to 3 months. For longer storage, aliquot and store at -20°C. Avoid freeze and thaw cycles.
Stability:	3 years from dispatch.
Gene Name:	interleukin 16
Database Link:	Entrez Gene 3603 Human Q14005
Synonyms:	FLJ16806; FLJ42735; FLJ44234; HsT19289; IL-16; LCF; OTTHUMP00000190849; OTTHUMP00000190850; prIL-16



[View online »](#)

Note: This chimeric rabbit antibody was made using the variable domain sequences of the original Mouse IgG2a format, for improved compatibility with existing reagents, assays and techniques.

Product images:



Flow-cytometry using the Anti-IL-16 antibody 14.1 (TA386187). Human peripheral blood leukocytes were stimulated with PMA and Ionomycin in presence of Monensin for 4 hours. The cells were fixed using 2% PFA, permeabilized using 0.5% Triton and stained with anti-Fluorescein IgG antibody (clone 4-4-20; isotype control, black line) or the rabbit IgG version of 14.1 (TA386187, pink line) at a dilution of 1:100 for 1h at RT. The blue line shows unstimulated human peripheral blood leukocytes stained with TA386187. After washing, bound antibody was detected using a goat anti-mouse IgG AlexaFluor® 488 antibody at a dilution of 1:1000 and cells were analyzed using a FACSCanto flow-cytometer.