

## Product datasheet for **TA386182**

### Ly75 Rabbit Monoclonal Antibody [Clone ID: NLDC145]

#### Product data:

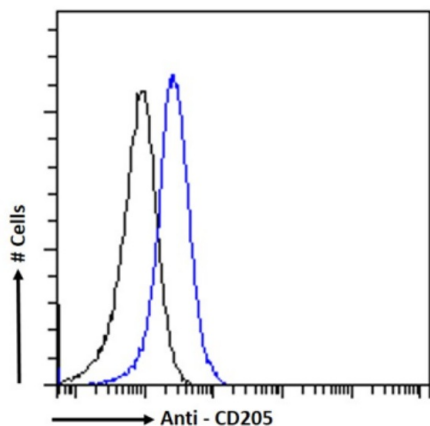
Product Type:	Primary Antibodies
Clone Name:	NLDC145
Applications:	FC, IF, IHC
Reactivity:	Mouse
Host:	Rabbit
Isotype:	IgG, kappa
Clonality:	Monoclonal
Immunogen:	This antibody was raised by immunising Wistar rats with mouse lymph node stroma.
Specificity:	<p>This antibody is specific for murine DEC-205, a lectin endocytic receptor expressed at high levels by many dendritic cell subsets, where it mediates antigen uptake. The epitope recognised by this antibody is trypsin-sensitive.</p> <p>This antibody has been used in IHC analysis of acetone-fixed mouse lymph node sections and cytospin preparations (Krall et al, 1986), and immunofluorescence analysis of epidermal sheets ( Krall et al, 1986).It has also been used in immunoblot experiments (Inaba et al, 1995) and in FC experiments to identify DEC-205-expressing cell subsets (Inaba et al, 1995; Hawiger et al, 2001).</p>
Formulation:	PBS with 0.02% Proclin 300.
Concentration:	lot specific
Conjugation:	Unconjugated
Storage:	Please store at 4°C for up to 3 months. For longer storage, aliquot and store at -20°C. Avoid freeze and thaw cycles.
Stability:	3 years from dispatch.
Gene Name:	lymphocyte antigen 75
Database Link:	<a href="#">Entrez Gene 17076 Mouse Q60767</a>
Synonyms:	CD205; CLEC13B; DEC-205; GP200-MR6



[View online »](#)

**Note:** This chimeric rabbit antibody was made using the variable domain sequences of the original Rat IgG2a format, for improved compatibility with existing reagents, assays and techniques.

### Product images:



Flow cytometry using the Anti-CD205 antibody NLDC145 (TA386182). Paraformaldehyde fixed mouse thymocytes permeabilized with 0.5% Triton were stained with anti-unknown specificity antibody ([TA385792]; isotype control, black line) or the rabbit IgG version of NLDC145 (TA386182, blue line) at a dilution of 1:100 for 1h at RT. After washing, the bound antibody was detected using a goat anti-rabbit IgG AlexaFluor® 488 antibody at a dilution of 1:1000 and cells analyzed using a FACSCanto flow-cytometer.