

## Product datasheet for **TA386178**

### **IL3RB (CSF2RB) Rabbit Monoclonal Antibody [Clone ID: BION-1]**

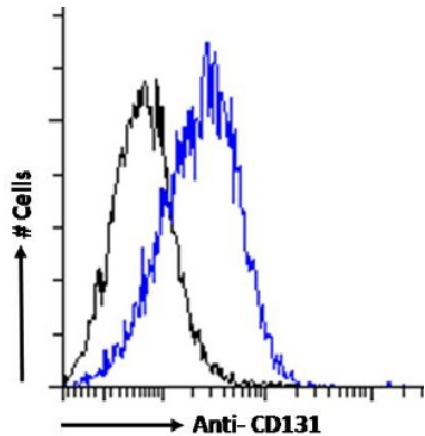
#### **Product data:**

<b>Product Type:</b>	Primary Antibodies
<b>Clone Name:</b>	BION-1
<b>Applications:</b>	BI, FN, IHC, IP, WB
<b>Reactivity:</b>	Human
<b>Host:</b>	Rabbit
<b>Isotype:</b>	IgG, kappa
<b>Clonality:</b>	Monoclonal
<b>Immunogen:</b>	BALB/c mice were immunized intraperitoneally with COS cells transfected DQP (Domain 4 of the common beta-chain) expression constructs. The immunizations were repeated 4 times at 2-week intervals. Four weeks after the final immunization, a mouse was boosted with COS transfectants intravenously. Three days later, splenocytes were harvested and fused with NS-1 myeloma cells. Hybridoma supernatants were screened on CHO DQP cells by flow cytometry, with untransfected CHO cells as a control. All antibodies were from single hybridoma clones as selected by a limiting dilution method. MoAbs were purified from ascites fluid or hybridoma supernatant by a protein A sepharose column.
<b>Specificity:</b>	<p>Binds to domain 4 of the common beta-chain and recognises the same binding site used by IL-5, GM-CSF and IL-3, or binds to an epitope in close proximity to it. Residues M363, R364, E366 (B-C loop) and R418 (F-G loop) in the common beta-chain are important for BION-1 binding.</p> <p>BION-1 has been shown to block eosinophil production, survival, and activation stimulated by IL-5 as well as by GM-CSF and IL-3, thereby influencing inflammation (Sun 1999). Further, BION-1 has been used in immunohistochemistry experiments in order to examine the presence of GM-CSF-receptor protein in human 8-cell embryos and blastocysts (Sjoblom 2002). In addition, a fab fragment derived from BION-1 has been used in the crystallisation of the common beta-chain to analyse the structure of the activation domain of the GM-CSF/IL-3/IL-5 receptor (Rossjohn 2000).</p>
<b>Formulation:</b>	PBS with 0.02% Proclin 300.
<b>Concentration:</b>	lot specific
<b>Conjugation:</b>	Unconjugated


[View online »](#)

<b>Storage:</b>	Please store at 4°C for up to 3 months. For longer storage, aliquot and store at -20°C. Avoid freeze and thaw cycles.
<b>Stability:</b>	3 years from dispatch.
<b>Gene Name:</b>	colony stimulating factor 2 receptor beta common subunit
<b>Database Link:</b>	<a href="#">Entrez Gene 1439 Human P32927</a>
<b>Synonyms:</b>	CD131; CDw131; IL3RB; IL5RB
<b>Note:</b>	This chimeric rabbit antibody was made using the variable domain sequences of the original Mouse IgG format, for improved compatibility with existing reagents, assays and techniques.

### Product images:



Flow-cytometry using the Anti-CD131 antibody BION-1 (TA386178). U937 cells were stained with anti-Fluorescein IgG antibody (clone 4-4-20; isotype control, black line) or the rabbit IgG version of BION-1 ((TA386178, blue line) at a dilution of 1:100 for 1h at RT. After washing, bound antibody was detected using a goat anti-rabbit IgG AlexaFluor® 488 antibody at a dilution of 1:1000 and cells analyzed using a FACSCanto flow-cytometer.