

Product datasheet for **TA386173**

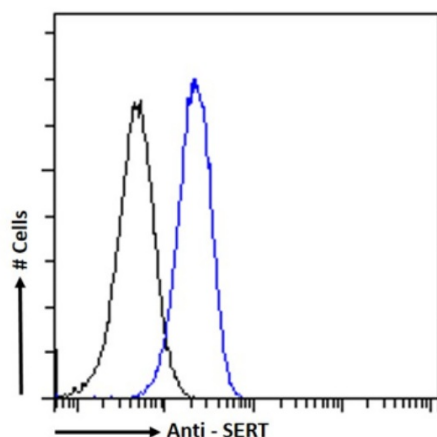
Serotonin transporter (SLC6A4) Rabbit Monoclonal Antibody [Clone ID: 8B6]

Product data:

Product Type:	Primary Antibodies
Clone Name:	8B6
Reactivity:	Human
Host:	Rabbit
Isotype:	IgG, kappa
Clonality:	Monoclonal
Immunogen:	8B6 was produced by immunising SERT KO mice with residues 73-616 of wildtype human SERT. Hybridomas were generated using established protocols.
Specificity:	<p>The 8B6 Fab binds to extracellular loops 2 and 4 of hSERT, as shown by crystallography (Coleman et al, 2016).</p> <p>The 8B6 Fab fragment was crystallised in complex with human SERT to aid structure determination (Coleman et al, 2016).</p>
Formulation:	PBS with 0.02% Proclin 300.
Concentration:	lot specific
Conjugation:	Unconjugated
Storage:	Please store at 4°C for up to 3 months. For longer storage, aliquot and store at -20°C. Avoid freeze and thaw cycles.
Stability:	3 years from dispatch.
Gene Name:	solute carrier family 6 member 4
Database Link:	Entrez Gene 6532 Human P31645
Synonyms:	5-HTT; 5-HTTLPR; 5HTT; hSERT; HTT; OCD1; OTTHUMP00000163633; SERT
Note:	This chimeric rabbit antibody was made using the variable domain sequences of the original Mouse IgG2a format, for improved compatibility with existing reagents, assays and techniques.



[View online »](#)

Product images:

Flow cytometry using the Anti-SERT antibody 8B6 (TA386173). Paraformaldehyde fixed HepG2 cells permeabilized with 0.5% Triton were stained with anti-unknown specificity antibody ([TA385792]; isotype control, black line) or the rabbit IgG version of 8B6 (TA386173, blue line) at a dilution of 1:100 for 1h at RT. After washing, the bound antibody was detected using a goat anti-rabbit IgG AlexaFluor® 488 antibody at a dilution of 1:1000 and cells analyzed using a FACSCanto flow-cytometer.