

## Product datasheet for **TA386167**

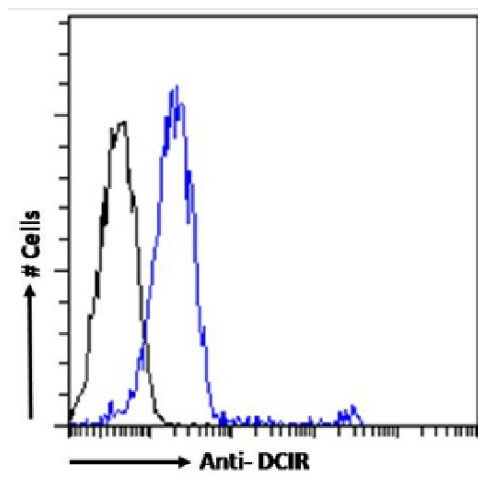
### CLECSF6 (CLEC4A) Rabbit Monoclonal Antibody [Clone ID: 900000000]

#### Product data:

Product Type:	Primary Antibodies
Clone Name:	900000000
Applications:	FC
Reactivity:	Human
Host:	Rabbit
Isotype:	IgG, kappa
Clonality:	Monoclonal
Immunogen:	This antibody was raised by immunising BALB/c mice with a dendritic cell immunoreceptor ectodomain-human Fc fusion protein.
Specificity:	This antibody is specific for human DCIR, which is expressed by monocytes, B cells, neutrophils, granulocytes and dendritic cells.  This antibody has been used in flow cytometric analysis of DCIR expression by peripheral blood mononuclear cells (Klechevsky et al, 2010). A recombinant humanised form of this antibody fused to protein antigens is under investigation as an antigen-targeting vaccine (Flamar et al, 2012), and has been shown to trigger antigen-specific CD8+ T cell immunity.
Formulation:	PBS with 0.02% Proclin 300.
Concentration:	lot specific
Conjugation:	Unconjugated
Storage:	Please store at 4°C for up to 3 months. For longer storage, aliquot and store at -20°C. Avoid freeze and thaw cycles.
Stability:	3 years from dispatch.
Gene Name:	C-type lectin domain family 4 member A
Database Link:	<a href="#">Entrez Gene 50856 Human Q9UMR7</a>
Synonyms:	CLECSF6; DCIR; DDB27; HDCGC13P; LLIR
Note:	This chimeric rabbit antibody was made using the variable domain sequences of the original Mouse IgG1 format, for improved compatibility with existing reagents, assays and techniques.



[View online »](#)

**Product images:**

Flow-cytometry using the anti-DCIR antibody 9E8 (TA386167). Human peripheral blood leukocytes were stained with anti-Fluorescein IgG antibody (clone 4-4-20; isotype control, black line) or the rabbit IgG1 version of 9E8 (TA386167, blue line) at a dilution of 1:100 for 1h at RT. After washing, bound antibody was detected using a goat anti-mouse IgG AlexaFluor® 488 antibody at a dilution of 1:1000 and cells analyzed using a FACSCanto flow-cytometer.