

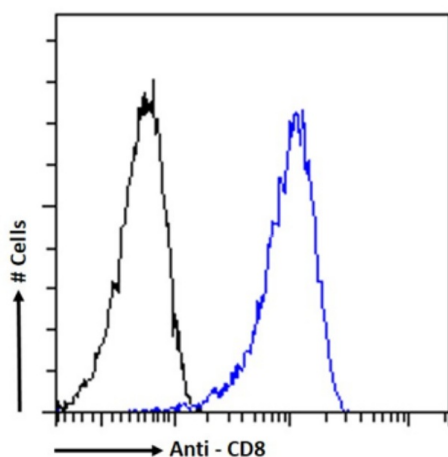
Product datasheet for TA386165

CD8 Rabbit Monoclonal Antibody [Clone ID: G10-1]

Product data:

Product Type:	Primary Antibodies
Clone Name:	G10-1
Applications:	FC, IF, IHC, IP
Reactivity:	Human
Host:	Rabbit
Isotype:	IgG, kappa
Clonality:	Monoclonal
Immunogen:	Human CD8.
Specificity:	This antibody is specific for human CD8, and binds human CD8+ T cells. It also cross-reacts with non-human primate CD8, including that of <i>Macaca nemestrina</i> (Southern pig-tailed macaque).
	<p>This antibody has been used to stain cells expressing CD8 by indirect immunofluorescence (Uckun et al, 1989) and in immunohistochemical analysis of aortic and iliac artery tissue from nonhuman primates (Masuda & Ross, 1989). It has also been employed in immunoprecipitation and gel electrophoresis experiments to investigate cell surface CD8 complexes (Ledbetter et al, 1985). A FITC-conjugated version of this antibody has been used to identify T cell populations in flow cytometry experiments (Chen et al, 2003). When conjugated to the ribosome-inhibitory protein ricin, this antibody acts as a potent CD8+ T cell-directed immunotoxin (Uckun et al, 1989).</p>
Formulation:	PBS with 0.02% Proclin 300.
Concentration:	lot specific
Conjugation:	Unconjugated
Storage:	Please store at 4°C for up to 3 months. For longer storage, aliquot and store at -20°C. Avoid freeze and thaw cycles.
Stability:	3 years from dispatch.
Note:	This chimeric rabbit antibody was made using the variable domain sequences of the original Mouse IgG2a format, for improved compatibility with existing reagents, assays and techniques.


[View online »](#)

Product images:

Flow cytometry using the Anti-CD8 antibody G10-1 (TA386165). Paraformaldehyde fixed Jurkat cells permeabilized with 0.5% Triton were stained with anti-unknown specificity antibody ([TA385792]; isotype control, black line) or the rabbit IgG version of G10-1 (TA386165, blue line) at a dilution of 1:100 for 1h at RT. After washing, the bound antibody was detected using a goat anti-rabbit IgG AlexaFluor® 488 antibody at a dilution of 1:1000 and cells analyzed using a FACSCanto flow-cytometer.