

Product datasheet for **TA386153**

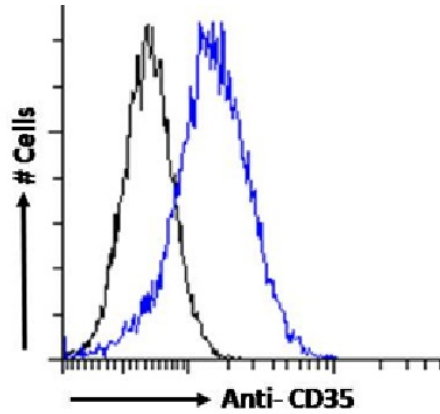
CD35 (CR1) Rabbit Monoclonal Antibody [Clone ID: HB-8592]

Product data:

Product Type:	Primary Antibodies
Clone Name:	HB-8592
Applications:	FC
Reactivity:	Human
Host:	Rabbit
Isotype:	IgG, kappa
Clonality:	Monoclonal
Immunogen:	Animals were immunized with purified CR1 from human erythrocytes. Spleen cells were fused with P3X63Ag8.653 myeloma cells.
Specificity:	<p>The antibody binds to a site distinct from the C3b binding site, and can be used to measure the number of receptors despite occupancy by ligand.</p> <p>This antibody has been used for analysis of the expression of the CR1 receptor on human leukemia-derived CD4+ T cell lines by flow cytometry (Yaskanin 1995).</p>
Formulation:	PBS with 0.02% Proclin 300.
Concentration:	lot specific
Conjugation:	Unconjugated
Storage:	Please store at 4°C for up to 3 months. For longer storage, aliquot and store at -20°C. Avoid freeze and thaw cycles.
Stability:	3 years from dispatch.
Gene Name:	complement component 3b/4b receptor 1 (Knops blood group)
Database Link:	Entrez Gene 1378 Human P17927
Synonyms:	C3BR; C4BR; CD35; KN
Note:	This chimeric rabbit antibody was made using the variable domain sequences of the original Mouse IgG1 format, for improved compatibility with existing reagents, assays and techniques.



[View online »](#)

Product images:

Flow-cytometry using the anti-CD35 antibody HB-8592 (TA386153). Jurkat cells were fixed using 2% PFA, permeabilised using 0.5% Triton and stained with anti-Fluorescein IgG antibody (clone 4-4-20; isotype control, black line) or the rabbit IgG1 version of HB-8592 (TA386153, blue line) at a dilution of 1:100 for 1h at RT. After washing, bound antibody was detected using a goat anti-mouse IgG AlexaFluor® 488 antibody at a dilution of 1:1000 and cells analyzed using a FACSCanto flow-cytometer.