

Product datasheet for **TA386136**

MHC I Rabbit Monoclonal Antibody [Clone ID: R1-21.2]

Product data:

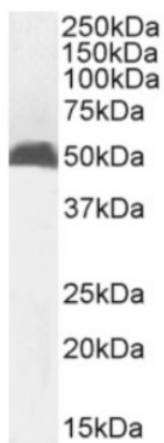
Product Type:	Primary Antibodies
Clone Name:	R1-21.2
Applications:	IHC, IP, R
Reactivity:	Mouse
Host:	Rabbit
Isotype:	IgG, kappa
Clonality:	Monoclonal
Immunogen:	This antibody was raised by immunising Lewis 1F rats with mouse CH-1 lymphoma cells. Spleen cells from immunised rats were fused with X-63Ag8-653 myeloma cells to generate hybridomas.
Specificity:	<p>This antibody is specific for murine MHC class I, and binds to polymorphic H-2 determinants expressed on most haplotypes. This antibody is, therefore, able to bind all H-2 class I molecules, independent of the allele. This antibody inhibits the binding of most mouse anti-H-2 antibodies to H-2k cells.</p> <p>This antibody binds murine H-2 MHC class I molecules, and has been used in both structural and biochemical studies. It has been employed to assess MHC class I expression in frozen, acetone-fixed mouse brain sections by immunohistochemistry (Miralvès et al, 2007), and to stain paraffin-embedded sections of mouse liver for H-2Kb expression (Limmer et al, 2005). It has also been used to precipitate mouse H-2Kk and H-2Dk class I molecules from detergent lysates of Ltk3.3/1 cells (Rada et al, 1990), and to stain H-2Kb and H-2Kk-expressing cells in FACS analysis (Bendelac, 1995). Cellular radioimmune assays have been used to confirm the binding of this antibody to spleen cells, and assess its strain specificity (Koch et al, 1983).</p>
Formulation:	PBS with 0.02% Proclin 300.
Concentration:	lot specific
Conjugation:	Unconjugated
Storage:	Please store at 4°C for up to 3 months. For longer storage, aliquot and store at -20°C. Avoid freeze and thaw cycles.
Stability:	3 years from dispatch.



[View online »](#)

Note: This chimeric rabbit antibody was made using the variable domain sequences of the original format, for improved compatibility with existing reagents, assays and techniques.

Product images:



Western Blot using anti-MHC I antibody R1-21.2 (TA386136) Mouse thymus tissue lysate (35 μ g protein in RIPA buffer) was resolved on a SDS PAGE gel and blots were probed with the chimeric rabbit version of R1-21.2 (TA386136) at 1 μ g/ml before detection using an anti-rabbit secondary antibody. A primary incubation of 1h was used and protein was detected by chemiluminescence.