

Product datasheet for **TA386128**

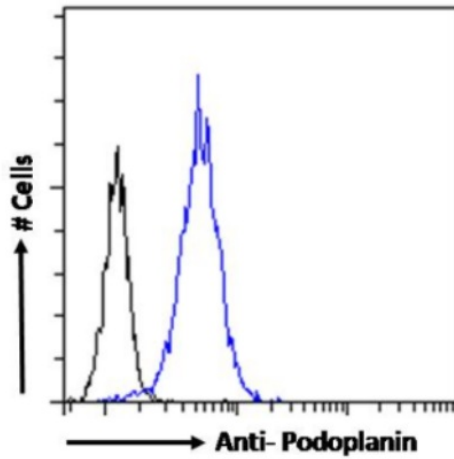
Recombinant Anti-Podoplanin (MAP tag) (Clone PMab-1)

Product data:

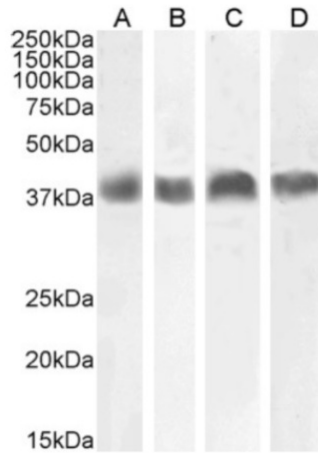
Product Type:	Tag Antibodies
Product Name:	Recombinant Anti-Podoplanin (MAP tag) (Clone PMab-1)
Clone Name:	PMab-1
Applications:	BI, ELISA, IHC, WB
Reactivity:	MAP tag
Host:	Rabbit
Clonality:	Monoclonal
Immunogen:	This antibody was raised by immunising rats with 14-residue synthetic peptide mpp3851, which corresponds to amino acids 38-51 (GDGMVPPGIEDKIT) of the platelet-aggregation-stimulating (PLAG) domain of mouse podoplanin. Spleen cells were then harvested, and fused to P3U1 cells to generate stable hybridomas.
Isotype:	IgG, kappa
Formulation:	PBS with 0.02% Proclin 300.
Concentration:	lot specific
Conjugation:	Unconjugated
Storage:	Please store at 4°C for up to 3 months. For longer storage, aliquot and store at -20°C. Avoid freeze and thaw cycles.
Stability:	3 years from dispatch.
Gene Name:	podoplanin
Note:	This chimeric rabbit antibody was made using the variable domain sequences of the original rat format, for improved compatibility with existing reagents, assays and techniques.



[View online »](#)

Product images:


Flow-cytometry using the anti-Podoplanin (MAP tag) antibody PMab-1 (TA386128) NIH3T3 cells were stained with anti-Fluorescein IgG antibody (clone 4-4-20; isotype control, black line) or the rabbit IgG-chimeric version of PMab-1 (TA386128, blue line) at a dilution of 1:100 for 1h at RT. After washing, bound antibody was detected using a goat anti-rabbit IgG AlexaFluor® 488 antibody at a dilution of 1:1000 and cells analyzed using a FACSCanto flow-cytometer.



Western Blot using anti-Podoplanin (MAP tag) antibody PMab-1 (TA386128) Mouse thymus (A), mouse brain (B), NIH3T3 cells (C) and mouse kidney (D) lysates (35µg protein in RIPA buffer) were resolved on a 10% SDS PAGE gel and blots probed with the chimeric rabbit IgG version of 1B4 ([TA386279]) at 0.01 µg/ml, 0.1 µg/ml, 0.001 µg/ml and 0.003 µg/ml, respectively, before detection using an anti-rabbit secondary antibody. A primary incubation of 1h was used and protein was detected by chemiluminescence.