

Product datasheet for **TA386127**

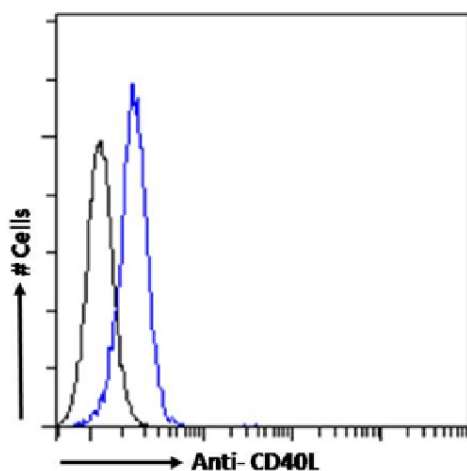
CD40L (CD40LG) Rabbit Monoclonal Antibody [Clone ID: AT161-10]

Product data:

Product Type:	Primary Antibodies
Clone Name:	AT161-10
Applications:	ELISA
Reactivity:	Human
Host:	Rabbit
Isotype:	IgG, kappa
Clonality:	Monoclonal
Immunogen:	This antibody was raised by immunising mice with Chinese hamster ovary (CHO) cells expressing human CD40L.
Specificity:	This antibody is specific for human CD40L, and has been screened for specificity using human CD40L-rat CD40 fusion protein This antibody has been used in an ELISA analysis to quantify serum levels of CD40L in samples from Alzheimer's patients (direct communication with originator, 2017).
Formulation:	PBS with 0.02% Proclin 300.
Concentration:	lot specific
Conjugation:	Unconjugated
Storage:	Please store at 4°C for up to 3 months. For longer storage, aliquot and store at -20°C. Avoid freeze and thaw cycles.
Stability:	3 years from dispatch.
Gene Name:	CD40 ligand
Database Link:	Entrez Gene 959 Human P29965
Synonyms:	CD40-L; CD40L; CD154; gp39; hCD40L; HIGM1; IGM; IMD3; T-BAM; TNFSF5; TRAP
Note:	This chimeric rabbit antibody was made using the variable domain sequences of the original Mouse IgG1 format, for improved compatibility with existing reagents, assays and techniques.



[View online »](#)

Product images:

Flow-cytometry using the anti-CD40L antibody AT161-10 (TA386127). Human peripheral blood leukocytes were stained with anti-Fluorescein IgG antibody (clone 4-4-20; isotype control, black line) or the rabbit IgG1 version of AT161-10 (TA386127, blue line) at a dilution of 1:100 for 1h at RT. After washing, bound antibody was detected using a goat anti-mouse IgG AlexaFluor® 488 antibody at a dilution of 1:1000 and cells analyzed using a FACSCanto flow-cytometer.