

Product datasheet for **TA386122**

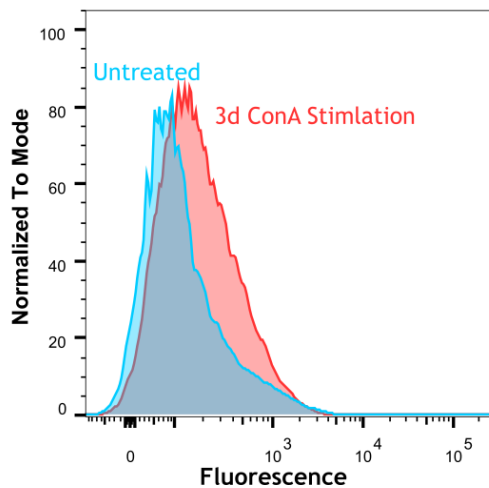
Pdcd1 Rabbit Monoclonal Antibody [Clone ID: RMP1-14]

Product data:

Product Type:	Primary Antibodies
Clone Name:	RMP1-14
Applications:	Bl, FC, IHC
Reactivity:	Mouse
Host:	Rabbit
Isotype:	IgG, kappa
Clonality:	Monoclonal
Immunogen:	The original rat hybridoma was generated by immunizing Sprague Dawley rats with mouse PD-1-transfected BHK cells. A P3U1 myeloma was used as the fusion partner.
Specificity:	This antibody binds to murine PD-1. Binding of the original rat IgG2a antibody to PD1 has been reported to prevent binding of both B7-H1-Ig (PD-L1-Ig) and B7-DC-Ig (PD-L2-Ig) fusion proteins to PD1.
Formulation:	PBS with 0.02% Proclin 300.
Concentration:	lot specific
Conjugation:	Unconjugated
Storage:	Please store at 4°C for up to 3 months. For longer storage, aliquot and store at -20°C. Avoid freeze and thaw cycles.
Stability:	3 years from dispatch.
Gene Name:	programmed cell death 1
Database Link:	Entrez Gene 18566 Mouse Q02242
Synonyms:	CD279; hPD-1; hPD-I; PD1; SLEB2
Note:	This chimeric rabbit antibody was made using the variable domain sequences of the original Rat IgG2a format, for improved compatibility with existing reagents, assays and techniques.



[View online »](#)

Product images:

Flow-cytometry using anti-PD-1 antibody RMP1-14 (TA386122) Staining of murine splenocytes (unstimulated and 3-day Con A stimulated) with the rabbit-chimeric version of RMP1-14 (TA386122) at a concentration of 1 µg/ml for 30 mins at RT. After washing, bound antibody was detected using a AF488 conjugated donkey anti-rabbit antibody. Con A stimulation induces PD-1 expression as evident by the increased fluorescence signal.