

## Product datasheet for TA386117

### Fibrinogen beta chain (FGB) Rabbit Monoclonal Antibody [Clone ID: 800000]

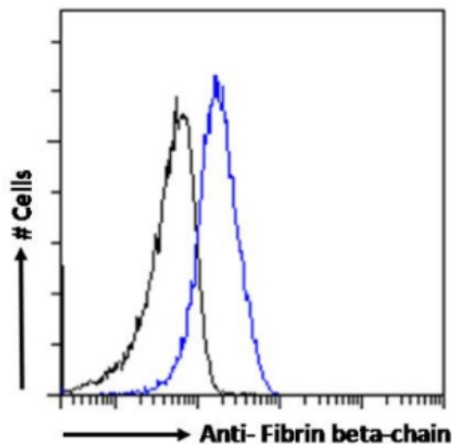
#### Product data:

|                |   |
|----------------|---|
| Product Type:  | Primary Antibodies  |
| Clone Name:    | 800000  |
| Applications:  | ELISA   |
| Reactivity:    | Human   |
| Host:          | Rabbit  |
| Isotype:       | IgG, kappa  |
| Clonality:     | Monoclonal  |
| Immunogen:     | 8E5 was prepared fusing Sp2/o myeloma cells with spleen cells derived from female BALB/c mice immunized with a synthetic $\beta$ -fibrin peptide sequence GHRPLDKC conjugated to MB-KLH (maleimidobenzoylated keyhole limpet hemocyanin).   |
| Specificity:   | <p>8E5 binds to the amino-terminal region of the <math>\beta</math>-chain of human fibrin at an epitope consisting of GHRPLDKC. Binding is possible in both the monomeric form and the polymeric form of the protein. The epitope recognised by this clone is only accessible upon conversion of fibrinogen to fibrin, which entails the proteolytic removal of fibrinopeptides A &amp; B from fibrinogen by thrombin. The antibody is therefore fibrin specific. Fibrin is a non-globular protein which plays a role in the clotting of blood and circulates as the precursor fibrinogen. Polymerization occurs through the action of the protease thrombin, which results in the active fibrin. Fibrin polymerizes as an insoluble matrix and forms a clot along with platelets over a wound site.</p> <p>The recombinant scFv version of 8E5 retains the same antigen-binding activity of the parent antibody. 8E5 can bind to fibrin in the monomeric and polymeric form, both in vivo and ex vivo. This antibody can also be used for the immunodetection of fibrin in vivo. Standard ELISA and competitive ELISA using the epitope peptide has been conducted with both the parental antibody and the scFv.</p> |
| Formulation:   | PBS with 0.02% Proclin 300.   |
| Concentration: | lot specific  |
| Conjugation:   | Unconjugated  |
| Storage:       | Please store at 4°C for up to 3 months. For longer storage, aliquot and store at -20°C. Avoid freeze and thaw cycles.   |


[View online »](#)

|                       |   |
|-----------------------|---|
| <b>Stability:</b>     | 3 years from dispatch.  |
| <b>Gene Name:</b>     | fibrinogen beta chain   |
| <b>Database Link:</b> | <a href="#">Entrez Gene 2244 Human P02675</a>   |
| <b>Synonyms:</b>      | MGC104327; MGC120405  |
| <b>Note:</b>          | This chimeric rabbit antibody was made using the variable domain sequences of the original Mouse IgG1 format, for improved compatibility with existing reagents, assays and techniques. |

### Product images:



Flow-cytometry using the anti-Fibrin beta-chain antibody 8E5 (TA386117) HepG2 cells were fixed using 2% PFA, permeabilised using 0.5% Triton and stained with anti-Fluorescein IgG antibody (clone 4-4-20; isotype control, black line) or the rabbit IgG-chimeric version of 8E5 (TA386117, blue line) at a dilution of 1:100 for 1h at RT. After washing, bound antibody was detected using a goat anti-rabbit IgG AlexaFluor® 488 antibody at a dilution of 1:1000 and cells analyzed using a FACSCanto flow-cytometer.