

Product datasheet for **TA386115**

desmosome/hemidesmosome Rabbit Monoclonal Antibody [Clone ID: F12]

Product data:

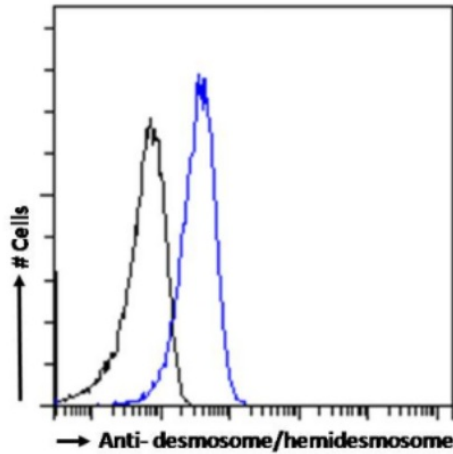
| | |
|----------------|--|
| Product Type: | Primary Antibodies |
| Clone Name: | F12 |
| Applications: | IF |
| Reactivity: | Human |
| Host: | Rabbit |
| Isotype: | IgG, kappa |
| Clonality: | Monoclonal |
| Immunogen: | F12 was established by fusing peripheral blood lymphocytes derived from a human vulgaris patient with a hetermyeloma cell line. |
| Specificity: | <p>F12 recognizes an unknown polypeptide of desmosomal and hemidesmosomal plaques with a MW of 185 kDa (determined from immunoblotting using bovine tongue epithelium extract as the substrate), and by IEM (immunoelectron microscopy) it was determined that it is the intracellular part of the desmosome that is bound (Gilbert, 1997). F12 shares some immunochemical properties with autoantibodies present in paraneoplastic pemphigus sera. Pemphigus diseases are those resulting in blistering of the skin due to the production of autoantibodies against keratinocyte surface proteins - autoantibodies of patients with pemphigus vulgaris recognize desmoglein 1 (Dsg1), a major glycoprotein of the desmosome complex.</p> <p>F12 labels the keratinocyte membrane and the basement membrane zone of rat tongue sections by indirect immunofluorescence (IIF). The antibody also stains both the cell membrane and the basement membrane zone of stratified squamous epithelia, and other epithelial tissues such as urinary bladder, small bowel, thymus, and liver. Non-epithelial tissues, such as myocardium are additionally stained. Sera from patients with pemphigus vulgaris can be incubated with human skin sections to determine their capacity to block the binding of F12 in an IIF blocking assay. IEM (immunoelectron microscopy) can be used to determine the ultralocalization of the antibody.</p> |
| Formulation: | PBS with 0.02% Proclin 300. |
| Concentration: | lot specific |
| Conjugation: | Unconjugated |



[View online »](#)

- Storage:** Please store at 4°C for up to 3 months. For longer storage, aliquot and store at -20°C. Avoid freeze and thaw cycles.
- Stability:** 3 years from dispatch.
- Note:** This chimeric rabbit antibody was made using the variable domain sequences of the original Human IgM format, for improved compatibility with existing reagents, assays and techniques.

Product images:



Flow-cytometry using the anti-desmosome/hemidesmosome antibody F12 (TA386115) A431 cells were fixed using 2% PFA, permeabilised using 0.5% Triton and stained with anti-Fluorescein IgG antibody (clone 4-4-20; isotype control, black line) or the rabbit IgG-chimeric version of F12 (TA386115, blue line) at a dilution of 1:100 for 1h at RT. After washing, bound antibody was detected using a goat anti-rabbit IgG AlexaFluor® 488 antibody at a dilution of 1:1000 and cells analyzed using a FACSCanto flow-cytometer.