

Product datasheet for **TA386101**

CD16 Rabbit Monoclonal Antibody [Clone ID: 3G8]

Product data:

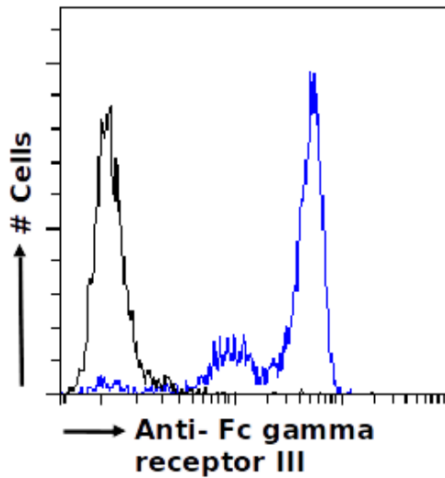
Product Type:	Primary Antibodies
Clone Name:	3G8
Applications:	Bl, FC, IHC, IP
Reactivity:	Human, Chimpanzee, Baboon, Cynomolgus, Monkey, Macaque, Marmoset
Host:	Rabbit
Isotype:	IgG, kappa
Clonality:	Monoclonal
Immunogen:	3G8 was prepared by immunizing mice with human PMN (polymorphonuclear leukocytes) cells.
Specificity:	<p>3G8 binds to CD16 at an epitope which is not the IgG-binding site. This antibody cannot distinguish between CD16a transmembrane isoform found on the surface of NK cells and macrophages (which can trigger the cytolytic response), and the GPI-linked CD16b isoform present on neutrophils or soluble CD16 found in the plasma. CD16 is the low affinity IgG receptor III and binds to aggregated IgG or IgG-antigen complex which functions in NK cell activation, phagocytosis and ADCC (antibody-dependent cell-mediated cytotoxicity).</p> <p>3G8 antibody was used to construct a recombinant bispecific scFv (bsscFv) along with the mAb clone F3.3 anti-HLA class II antibody (connected by a (Gly4Ser)4 linker) which was expressed in SF21 insect cells. This bsscFv allows NK cells to target malignant B lymphoid cells and mediates effector cell lysis (ASCC) of the malignant cells (also lysis of primary leukaemia samples). 3G8 is also able to block neutrophil phagocytosis and stimulates NK cell proliferation, and can be used in FC, SPR, IP and IHC studies.</p>
Formulation:	PBS with 0.02% Proclin 300.
Concentration:	lot specific
Conjugation:	Unconjugated
Storage:	Please store at 4°C for up to 3 months. For longer storage, aliquot and store at -20°C. Avoid freeze and thaw cycles.
Stability:	3 years from dispatch.



[View online »](#)

Note: This chimeric rabbit antibody was made using the variable domain sequences of the original Mouse IgG1 format, for improved compatibility with existing reagents, assays and techniques.

Product images:



Flow-cytometry using the anti-Fc gamma receptor III antibody 3G8 (TA386101) Human peripheral blood leukocytes were fixed using 2% PFA, permeabilised using 0.5% Triton and stained with unimmunized rabbit IgG antibody (MOPC-21; isotype control, black line) or the rabbit IgG-chimeric version of 3G8 (TA386101, blue line) at a dilution of 1:100 for 1h at RT. After washing, bound antibody was detected using a goat anti-rabbit IgG AlexaFluor® 488 antibody at a dilution of 1:1000 and cells analyzed using a FACSCanto flow-cytometer.