

## Product datasheet for **TA386093**

### CD47 Rabbit Monoclonal Antibody [Clone ID: mIAP430]

#### Product data:

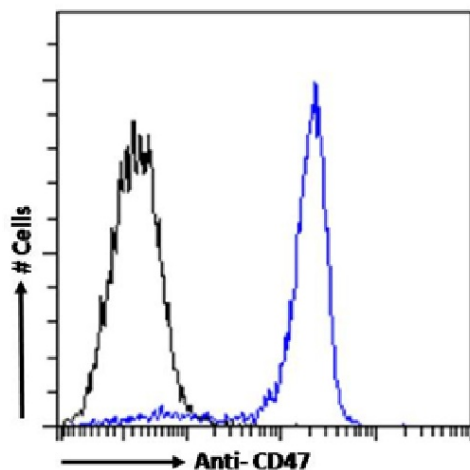
Product Type:	Primary Antibodies
Clone Name:	mIAP430
Applications:	BI, IF
Reactivity:	Human
Host:	Rabbit
Isotype:	IgG, kappa
Clonality:	Monoclonal
Immunogen:	This antibody was raised by immunising IAP-deficient mice with purified human placental CD47.
Specificity:	<p>This antibody recognises CD47 which is a a multitransmembrane glycoprotein widely expressed on all hematopoietic cells and most other cell types. It is involved in cell adhesion, Ca<sup>2+</sup> influx, platelet activation and peripheral mononuclear neutrophils migration across endothelial and epithelial monolayers.</p> <p>This antibody can be used to investigate the role of the CD47 receptor. mIAP430 was first used to visualise the distribution of CD47 on fusing macrophages (Han et al., 2000). Further, it was demonstrated that this antibody can block fusion of macrophages by blocking CD47 and preventing the binding of this receptor with MFR (Han et al., 2000).</p>
Formulation:	PBS with 0.02% Proclin 300.
Concentration:	lot specific
Conjugation:	Unconjugated
Storage:	Please store at 4°C for up to 3 months. For longer storage, aliquot and store at -20°C. Avoid freeze and thaw cycles.
Stability:	3 years from dispatch.
Gene Name:	CD47 molecule
Database Link:	<a href="#">Entrez Gene 961 Human Q08722</a>
Synonyms:	IAP; MER6; OA3



[View online »](#)

**Note:** This chimeric rabbit antibody was made using the variable domain sequences of the original Rat IgG2a format, for improved compatibility with existing reagents, assays and techniques.

### Product images:



Flow-cytometry using the anti-CD47 antibody mIAP430 (TA386093). Jurkat cells were stained with anti-Fluorescein IgG antibody (clone 4-4-20; isotype control, black line) or the rabbit IgG1 version of mIAP430 (TA386093, blue line) at a dilution of 1:100 for 1h at RT. After washing, bound antibody was detected using a goat anti-mouse IgG AlexaFluor® 488 antibody at a dilution of 1:1000 and cells analyzed using a FACSCanto flow-cytometer.