

Product datasheet for **TA386071**

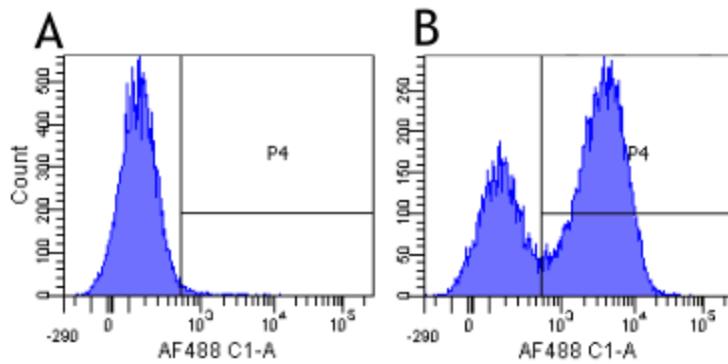
Integrin alpha 4 (ITGA4) Rabbit Monoclonal Antibody [Clone ID: Natalizumab]

Product data:

Product Type:	Primary Antibodies
Clone Name:	Natalizumab
Applications:	BI, FC
Reactivity:	Human
Host:	Rabbit
Isotype:	IgG, kappa
Clonality:	Monoclonal
Immunogen:	The RAMOS cell line, a non-EBV releasing cell line, injected into mice.
Specificity:	This antibody binds to the alpha 4 binds subunit of $\alpha 4\beta 1$ (also known as very late antigen 4 [VLA-4] or CD49d-CD29) and $\alpha 4\beta 7$ integrin This antibody binds to human integrin alpha 4 and has been used to treat Multiple Sclerosis and Crohn's Disease.
Formulation:	PBS with 0.02% Proclin 300.
Concentration:	lot specific
Conjugation:	Unconjugated
Storage:	Please store at 4°C for up to 3 months. For longer storage, aliquot and store at -20°C. Avoid freeze and thaw cycles.
Stability:	3 years from dispatch.
Gene Name:	integrin subunit alpha 4
Database Link:	Entrez Gene 3676 Human P13612
Synonyms:	CD49D; IA4; MGC90518; VLA-4
Note:	NOT FOR THERAPEUTIC USE - This is a research-grade biosimilar. This chimeric rabbit antibody was made using the variable domain sequences of the original human IgG4 format, for improved compatibility with existing reagents, assays and techniques.



[View online »](#)

Product images:

Flow-cytometry using the anti-Integrin alpha 4 research biosimilar antibody Natalizumab (TA386071) Human lymphocytes were stained with an isotype control ([TA385644], panel A) or the rabbit-chimeric version of Natalizumab (TA386071, panel B) at a concentration of 1 µg/ml for 30 mins at RT. After washing, bound antibody was detected using a AF488 conjugated donkey anti-rabbit antibody and cells analysed on a FACSCanto flow-cytometer.