

Product datasheet for **TA386065**

Amyloid Precursor Protein (APP) Rabbit Monoclonal Antibody [Clone ID: 6000000000]

Product data:

Product Type:	Primary Antibodies
Clone Name:	60000000000
Applications:	ELISA, EM, IHC, IP, WB
Reactivity:	Human
Host:	Rabbit
Isotype:	IgG, kappa
Clonality:	Monoclonal
Immunogen:	Amyloid-beta peptide.
Specificity:	This antibody binds to amino acid residues 1-16 of beta amyloid. This antibody recognises human amyloid beta and can be used to detect amyloid in ELISAs, WB and tissue sections.
Formulation:	PBS with 0.02% Proclin 300.
Concentration:	lot specific
Conjugation:	Unconjugated
Storage:	Please store at 4°C for up to 3 months. For longer storage, aliquot and store at -20°C. Avoid freeze and thaw cycles.
Stability:	3 years from dispatch.
Gene Name:	amyloid beta precursor protein
Database Link:	Entrez Gene 351 Human P05067
Synonyms:	A4; AAA; ABPP; AD1; APPI; CTFgamma; CVAP; OTTHUMP00000096096; PN-II; PN2; PreA4
Note:	This chimeric rabbit antibody was made using the variable domain sequences of the original Mouse IgG1 format, for improved compatibility with existing reagents, assays and techniques.

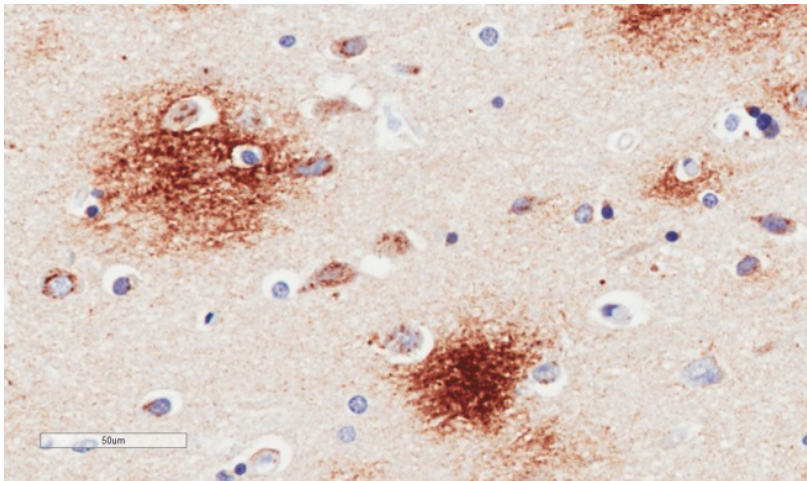


[View online »](#)

Product images:



Western Blot using anti-Amyloid beta antibody 6E10 (TA386065) Human brain cerebral cortex (A), frontal cortex (B) and cerebellum (C) lysate samples (35µg protein in RIPA buffer) were resolved on a 10% SDS PAGE gel and blots probed with the chimeric rabbit version of 6E10 (TA386065) at 0.3 µg/ml before detection using an anti-rabbit secondary antibody. A primary incubation of 1h was used and protein was detected by chemiluminescence. The expected band size for Amyloid beta is ~35kDa, though this protein is known to form SDS-resistant low-molecular weight oligomers as seen in this blot (i.e. dimers, c.f. Kumar et al. PMID: 21527912). TA386065 successfully detected aggregate human Amyloid beta in human brain cerebral cortex, frontal cortex and cerebellum lysate samples.



Immunohistochemical staining of human Alzheimer's disease hippocampus tissue using anti-Amyloid Beta antibody (TA386065) 6E10. Antigen retrieval was achieved by microwaving in citrate buffer (pH6), followed by blocking with protein block serum-free buffer. Primary antibody incubation with TA386065 was carried out at 4 µg/ml for 30 minutes. Samples were then incubated with an anti-rabbit IgG HRP secondary antibody for 20 mins followed by DAB (3,3'-diaminobenzidine), and counter-staining with haematoxylin. Staining of amyloid plaques in the parahippocampal gyrus may be observed. Recommended concentration, 2-4 µg/ml.