

Product datasheet for **TA386059**

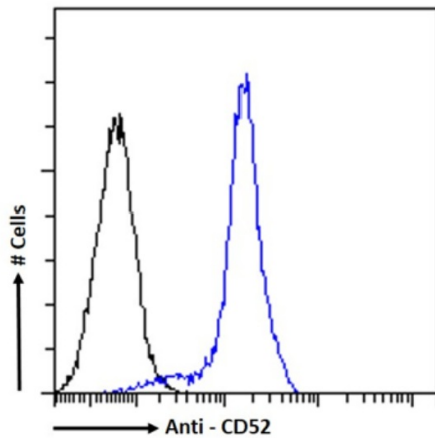
CD52 Rabbit Monoclonal Antibody [Clone ID: CF1D12]

Product data:

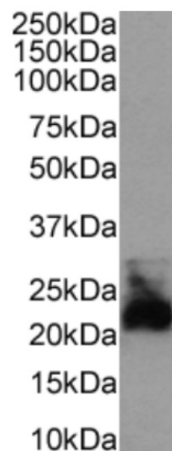
Product Type:	Primary Antibodies
Clone Name:	CF1D12
Applications:	FC
Reactivity:	Human
Host:	Rabbit
Isotype:	IgG, kappa
Clonality:	Monoclonal
Specificity:	This antibody binds to human CD52. This antibody binds to human CD52.
Formulation:	PBS with 0.02% Proclin 300.
Concentration:	lot specific
Conjugation:	Unconjugated
Storage:	Please store at 4°C for up to 3 months. For longer storage, aliquot and store at -20°C. Avoid freeze and thaw cycles.
Stability:	3 years from dispatch.
Gene Name:	CD52 molecule
Database Link:	Entrez Gene 1043 Human P31358
Synonyms:	CDw52; HE5
Note:	This chimeric rabbit antibody was made using the variable domain sequences of the original Mouse IgG3 format, for improved compatibility with existing reagents, assays and techniques.



[View online »](#)

Product images:

Flow cytometry using the Anti-CD52 antibody CF1D12 (TA386059). Paraformaldehyde fixed Daudi cells permeabilized with 0.5% Triton were stained with anti-unknown specificity antibody ([TA385792]; isotype control, black line) or the rabbit IgG version of CF1D12 (TA386059, blue line) at a dilution of 1:100 for 1h at RT. After washing, the bound antibody was detected using a goat anti-rabbit IgG AlexaFluor® 488 antibody at a dilution of 1:1000 and cells analyzed using a FACSCanto flow-cytometer.



Western Blot using CD52 antibody CF1D12 (TA386059). Human spleen tissue lysate (35µg protein in RIPA buffer) were resolved on a SDS PAGE gel and blots were probed with the chimeric rabbit version of CF1D12 (TA386059) 0.1µg/ml before detection using an anti-rabbit secondary antibody. A primary incubation of 1h was used and protein was detected by chemiluminescence.