

## Product datasheet for **TA386057**

### CD37 Mouse Monoclonal Antibody [Clone ID: MB-1]

#### Product data:

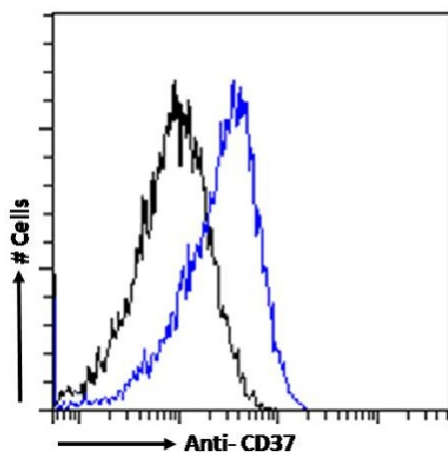
Product Type:	Primary Antibodies
Clone Name:	MB-1
Applications:	FC, IF, IHC, WB
Reactivity:	Human
Host:	Mouse
Isotype:	IgG1, kappa
Clonality:	Monoclonal
Immunogen:	BALB/c mice were immunized with lymph node cells from a patient with nodular poorly differentiated lymphocytic lymphoma. Immunophenotyping studies of these cells identified them as B cells expressing SIgG/λ, as well as HLA-DR, Leu-12, and B1.
Specificity:	<p>This antibody is specific for human CD37, which is expressed on virtually all mature B lymphocytes, but not on pro-B or plasma cells. CD37 is highly expressed on all forms of B cell non-Hodgkin lymphoma, chronic lymphocyte leukemia, and other leukemias. CD37 does not appear to be expressed on T cells, thymocytes, granulocytes or platelets.</p> <p>This antibody recognizes human CD37, and has been used to identify and characterise the CD37 antigen in cell labelling, indirect immunofluorescence and IP analysis (Link, 1986). In particular, the use of this antibody to label malignant B cells indicates that expression of CD37 occurs relatively late in B cell maturation, as it is not expressed on "immature" B lineage lymphoid neoplasms.</p>
Formulation:	PBS with 0.02% Proclin 300.
Concentration:	lot specific
Conjugation:	Unconjugated
Storage:	Please store at 4°C for up to 3 months. For longer storage, aliquot and store at -20°C. Avoid freeze and thaw cycles.
Stability:	3 years from dispatch.
Gene Name:	CD37 molecule
Database Link:	<a href="#">Entrez Gene 951 Human P11049</a>



[View online »](#)

Synonyms: GP52-40; MGC120234; tetraspanin-26; Tspan-26; TSPAN26

### Product images:



Flow cytometry using the Anti-CD37 antibody MB-1 (TA386057). Paraformaldehyde fixed Daudi cells were stained with anti-unknown specificity antibody ([TA385783]; isotype control, black line) or the mouse IgG1 version of MB-1 (TA386057, blue line) at a dilution of 1:100 for 1h at RT. After washing, the bound antibody was detected using a goat anti-mouse IgG AlexaFluor® 488 antibody at a dilution of 1:1000 and cells analyzed using a FACSCanto flow-cytometer.