

## Product datasheet for **TA386021**

### CD62L (SELL) Rabbit Monoclonal Antibody [Clone ID: DREG-56]

#### Product data:

Product Type:	Primary Antibodies
Clone Name:	DREG-56
Applications:	BI, FC, IP, WB
Reactivity:	Human, Chimpanzee, Bovine
Host:	Rabbit
Isotype:	IgG, kappa
Clonality:	Monoclonal
Immunogen:	This antibody was produced by immunizing mice with the concentrated supernatant generated after centrifugation of human peripheral blood leukocytes.
Specificity:	<p>This antibody is specific for human L-selectin, a homing receptor selectively expressed on lymphocytes, which allows their entry into secondary lymphoid tissues via high endothelial venules.</p> <p>This antibody has been used in WB, IP and binding assays to define a lymphocyte homing receptor for PLN HEVs (Kishimoto, 1990). In vitro, this antibody has been shown to specifically inhibit over 90% of binding of human lymphocytes to HEVs within frozen sections of peripheral, but not mucosal, lymphoid tissue (Kishimoto, 1990). This antibody has also been used in labelling studies to demonstrate that the trophectoderm of implantation-competent human embryos expresses L-selectin (Genbacev, 2003).</p>
Formulation:	PBS with 0.02% Proclin 300.
Concentration:	lot specific
Conjugation:	Unconjugated
Storage:	Please store at 4°C for up to 3 months. For longer storage, aliquot and store at -20°C. Avoid freeze and thaw cycles.
Stability:	3 years from dispatch.
Gene Name:	selectin L
Database Link:	<a href="#">Entrez Gene 6402 Human P14151</a>

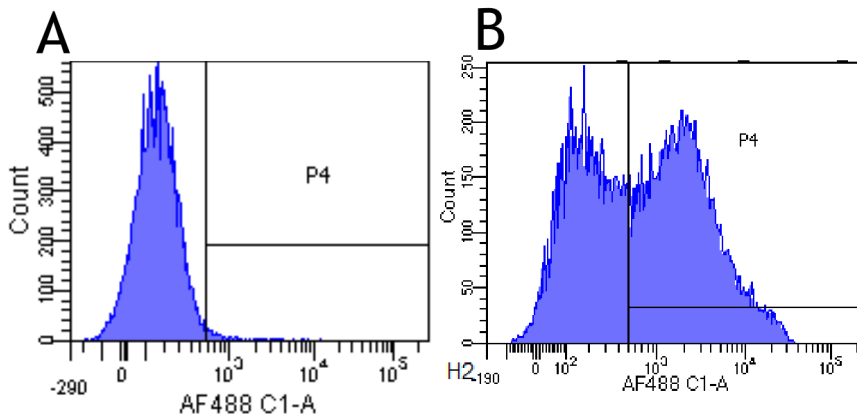


[View online »](#)

**Synonyms:** CD62L; gp90-MEL; hLHRc; LAM-1; LAM1; LECAM1; Leu-8; LEU8; LNHR; LSEL; Lyam-1; LYAM1; PLNHR; TQ1

**Note:** This chimeric rabbit antibody was made using the variable domain sequences of the original Mouse IgG1 format, for improved compatibility with existing reagents, assays and techniques.

**Product images:**



Flow-cytometry using anti-CD62L antibody DREG-56 (TA386021) Human lymphocytes were stained with an isotype control ([TA385644], panel A) or the rabbit-chimeric version of DREG-56 (TA386021, panel B) at a concentration of 1  $\mu$ g/ml for 30 mins at RT. After washing, bound antibody was detected using a AF488 conjugated donkey anti-rabbit antibody and cells analysed on a FACSCanto flow-cytometer.