

Product datasheet for **TA386018**

Sell Rabbit Monoclonal Antibody [Clone ID: MEL-14]

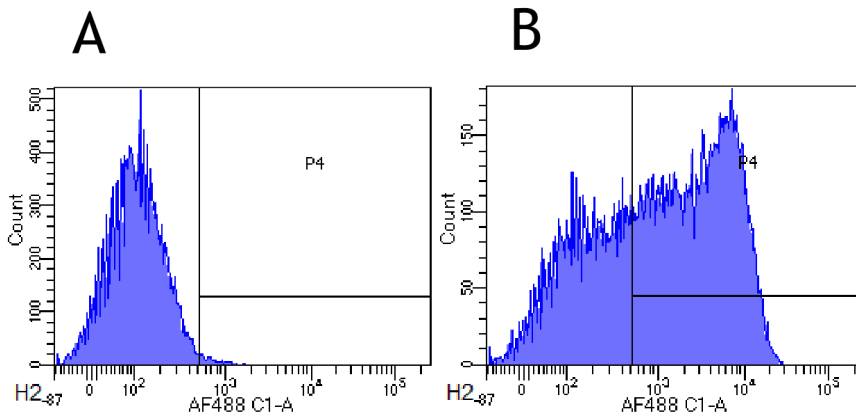
Product data:

Product Type:	Primary Antibodies
Clone Name:	MEL-14
Applications:	BI, FC, IHC, IP
Reactivity:	Mouse
Host:	Rabbit
Isotype:	IgG, kappa
Clonality:	Monoclonal
Immunogen:	C3H/eb mouse B lymphoma 38C-13.
Specificity:	<p>This antibody binds to mouse CD62L the mouse peripheral lymph node homing receptor, which is a lectin-like cell surface protein rapidly down-regulated upon cell activation with phorbol 12-myristate 13-acetate.</p> <p>This antibody detects mouse CD62L and has been reported to inhibit the interaction of neutrophils with endothelial cells in vitro and inhibit the migration of neutrophils from the blood into sites of acute inflammation in the skin (Lewinsohn et al. 1987).</p>
Formulation:	PBS with 0.02% Proclin 300.
Concentration:	lot specific
Conjugation:	Unconjugated
Storage:	Please store at 4°C for up to 3 months. For longer storage, aliquot and store at -20°C. Avoid freeze and thaw cycles.
Stability:	3 years from dispatch.
Gene Name:	selectin, lymphocyte
Database Link:	Entrez Gene 20343 Mouse P18337
Synonyms:	CD62L; gp90-MEL; hLHRc; LAM-1; LAM1; LECAM1; Leu-8; LEU8; LNHR; LSEL; Lyam-1; LYAM1; PLNHR; TQ1
Note:	This chimeric rabbit antibody was made using the variable domain sequences of the original Rat IgG2a format, for improved compatibility with existing reagents, assays and techniques.

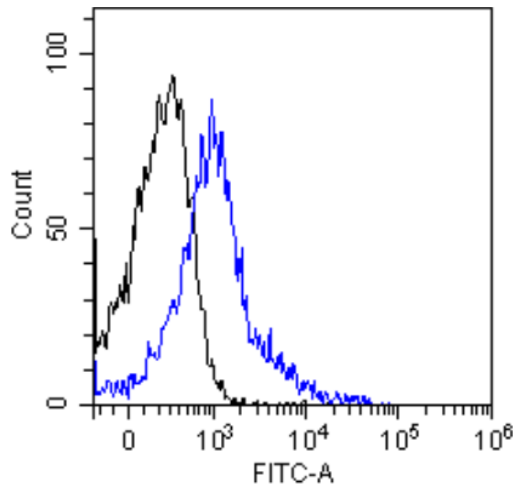


[View online »](#)

Product images:



Flow-cytometry using anti-CD62L antibody MEL-14 (TA386018) Mouse lymphocytes were stained with an anti-CD44 control ([TA386028], panel A) or the rabbit-chimeric version of MEL-14 (TA386018, panel B) at a concentration of 1 $\mu\text{g/ml}$ for 30 mins at RT. After washing, bound antibody was detected using a AF488 conjugated donkey anti-rabbit antibody and cells analysed on a FACSCanto flow-cytometer.



Flow-cytometry using the anti-CD62L (L-selectin) antibody MEL-14 (TA386018) Mouse splenocytes were stained with unimmunized rabbit IgG antibody (black line) or the rabbit-chimeric version of MEL-14 (TA386018, blue line) at a concentration of 10 $\mu\text{g/ml}$ for 30 mins at RT. After washing, bound antibody was detected using an anti-rabbit IgG JK (FITC-conjugate) antibody at 2 $\mu\text{g/ml}$ and cells analyzed on a FACSCanto flow-cytometer.