

## Product datasheet for **TA386015**

### CD19 Rabbit Monoclonal Antibody [Clone ID: FMC63]

#### Product data:

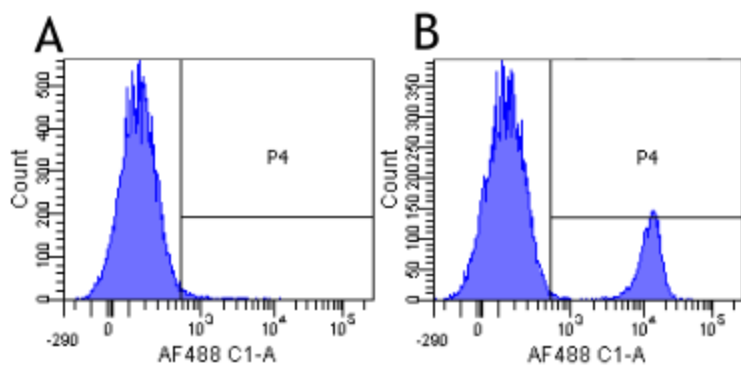
Product Type:	Primary Antibodies
Clone Name:	FMC63
Applications:	FC, IF
Reactivity:	Human
Host:	Rabbit
Isotype:	IgG, kappa
Clonality:	Monoclonal
Immunogen:	Human polymorphocytic leukaemia cell line JVM3.
Specificity:	Binds human CD19.

This antibody binds human CD19, a 95 kDa protein expressed on the B-lymphocyte lineage. Recently it has been incorporated into a CD19 scFv- 41BB- CD3 $\zeta$  fusion protein-encoding lentiviral vector which was used in combination with a UCART19 cell therapy to cure high risk CD19+ infant acute lymphoblastic leukemia.

Formulation:	PBS with 0.02% Proclin 300.
Concentration:	lot specific
Conjugation:	Unconjugated
Storage:	Please store at 4°C for up to 3 months. For longer storage, aliquot and store at -20°C. Avoid freeze and thaw cycles.
Stability:	3 years from dispatch.
Gene Name:	CD19 molecule
Database Link:	<a href="#">Entrez Gene 930 Human P15391</a>
Synonyms:	B4; Leu-12; MGC12802
Note:	This chimeric rabbit antibody was made using the variable domain sequences of the original Mouse IgG2a format, for improved compatibility with existing reagents, assays and techniques.



[View online »](#)

**Product images:**

Flow-cytometry using anti-CD19 antibody FMC63 (TA386015) Human lymphocytes were stained with an isotype control ([TA385644], panel A) or the rabbit-chimeric version of FMC63 (TA386015, panel B) at a concentration of 1  $\mu\text{g}/\text{ml}$  for 30 mins at RT. After washing, bound antibody was detected using a AF488 conjugated donkey anti-rabbit antibody and cells analysed on a FACSCanto flow-cytometer.