

## Product datasheet for **TA386012**

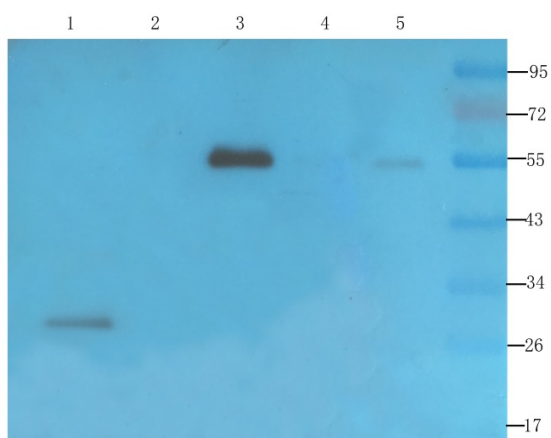
### VEGFA Mouse Monoclonal Antibody [Clone ID: VG76e]

#### Product data:

Product Type:	Primary Antibodies
Clone Name:	VG76e
Applications:	ELISA, IHC, WB
Reactivity:	Human, Mouse, Primate
Host:	Mouse
Isotype:	IgG1, kappa
Clonality:	Monoclonal
Immunogen:	Human VEGF189 expressed in E. coli.
Specificity:	VG76e will detect both native and denatured VEGF, an angiogenic growth factor and a prognostic indicator for cancer when detected in serum.
Formulation:	PBS with 0.02% Proclin 300.
Concentration:	lot specific
Conjugation:	Unconjugated
Storage:	Please store at 4°C for up to 3 months. For longer storage, aliquot and store at -20°C. Avoid freeze and thaw cycles.
Stability:	3 years from dispatch.
Gene Name:	vascular endothelial growth factor A
Database Link:	<a href="#">Entrez Gene 7422 Human P15692</a>
Synonyms:	MGC70609; MVCD1; VEGF; VEGF-A; VPF



[View online »](#)

**Product images:**

Western Blot using anti-VEGF antibody TA386012. Rat thyroid (lane 1), rat bladder (lane 2), mouse brain (lane 3), human thyroid cancer (lane 4) and human ovarian cancer (lane 5) samples were resolved on a 12% SDS PAGE gel and blots probed with TA386012 at 2  $\mu\text{g}/\text{ml}$  before being detected by a secondary antibody. Bands corresponding to different isoforms of VEGF were detected.