

## Product datasheet for **TA386011**

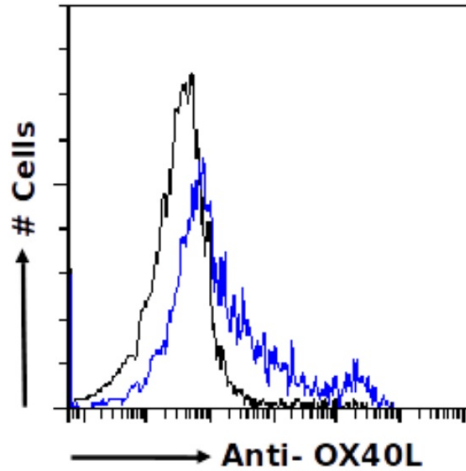
### CD252 (TNFSF4) Rabbit Monoclonal Antibody [Clone ID: R4930 (Oxelumab)]

#### Product data:

Product Type:	Primary Antibodies
Clone Name:	R4930 (Oxelumab)
Applications:	BI, FC
Reactivity:	Human
Host:	Rabbit
Isotype:	IgG, kappa
Clonality:	Monoclonal
Immunogen:	Oxelumab binds to human OX40L, the ligand of OX40, stimulatory receptor that is expressed on activated T cells, natural killer (NK) cells and natural killer T (NKT) cells.
Specificity:	Binds to human OX40L.  This antibody binds to the co-stimulatory OX40L, inhibiting its interaction with OX40.
Formulation:	PBS with 0.02% Proclin 300.
Concentration:	lot specific
Conjugation:	Unconjugated
Storage:	Please store at 4°C for up to 3 months. For longer storage, aliquot and store at -20°C. Avoid freeze and thaw cycles.
Stability:	3 years from dispatch.
Gene Name:	tumor necrosis factor superfamily member 4
Database Link:	<a href="#">Entrez Gene 7292 Human P23510</a>
Synonyms:	CD134L; CD252; GP34; OX-40L; OX40L; OX40L; TXGP1
Note:	This chimeric rabbit antibody was made using the variable domain sequences of the original Human IgG1 format, for improved compatibility with existing reagents, assays and techniques.



[View online »](#)

**Product images:**

Flow-cytometry using the anti-OX40L antibody [R4930] (Oxelumab) (TA386011) Human peripheral blood leukocytes were fixed using 2% PFA, permeabilised using 0.5% Triton and stained with unimmunized rabbit IgG antibody (MOPC-21; isotype control, black line) or the rabbit IgG-chimeric version of [R4930] (TA386011, blue line) at a dilution of 1:100 for 1h at RT. After washing, bound antibody was detected using a goat anti-rabbit IgG AlexaFluor® 488 antibody at a dilution of 1:1000 and cells analyzed using a FACSCanto flow-cytometer.