

Product datasheet for **TA386009**

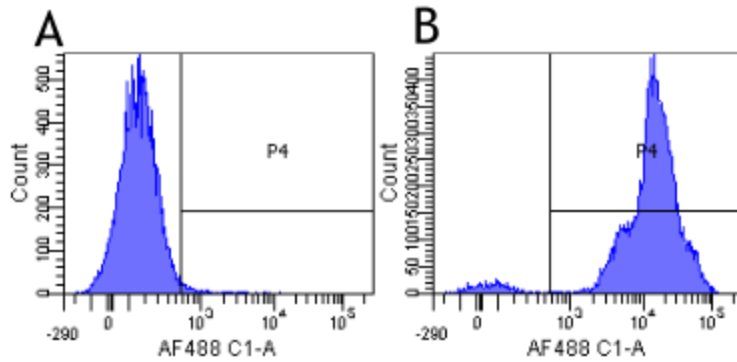
CD11a (ITGAL) Rabbit Monoclonal Antibody [Clone ID: hu1124 (Efalizumab)]

Product data:

Product Type:	Primary Antibodies
Clone Name:	hu1124 (Efalizumab)
Applications:	BI, FC
Reactivity:	Human
Host:	Rabbit
Isotype:	IgG, kappa
Clonality:	Monoclonal
Immunogen:	Efalizumab binds to CD11a, a subunit of leukocyte function antigen-1 (LFA-1), which is expressed on all leukocytes.
Specificity:	Binds to human LFA-1. Efalizumab binds to the LFA-1 alpha I domain blocking the ICAM-1 binding site via steric hindrance.
Formulation:	PBS with 0.02% Proclin 300.
Concentration:	lot specific
Conjugation:	Unconjugated
Storage:	Please store at 4°C for up to 3 months. For longer storage, aliquot and store at -20°C. Avoid freeze and thaw cycles.
Stability:	3 years from dispatch.
Gene Name:	integrin subunit alpha L
Database Link:	Entrez Gene 3683 Human P20701
Synonyms:	CD11A; LFA-1; LFA-1A; LFA1A
Note:	This chimeric rabbit antibody was made using the variable domain sequences of the original Human IgG1 format, for improved compatibility with existing reagents, assays and techniques.



[View online »](#)

Product images:

Flow-cytometry using the anti-CD11a research biosimilar antibody Efalizumab (hu1124, TA386009) Human lymphocytes were stained with an isotype control ([TA385644], panel A) or the rabbit-chimeric version of Efalizumab (TA386009, panel B) at a concentration of 1 µg/ml for 30 mins at RT. After washing, bound antibody was detected using a AF488 conjugated donkey anti-rabbit antibody and cells analysed on a FACSCanto flow-cytometer.