

## Product datasheet for **TA386007**

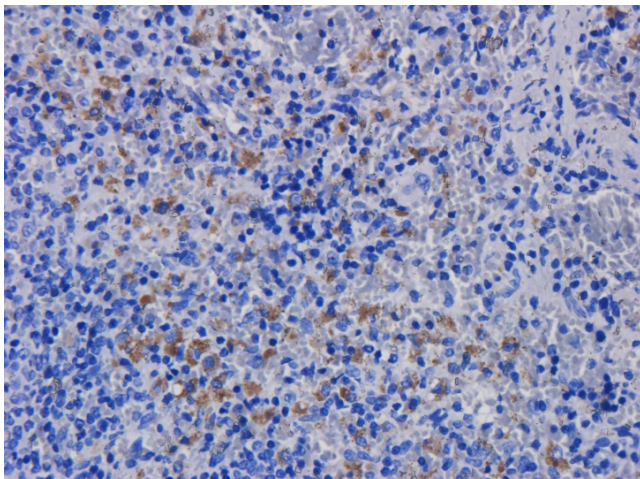
### CD11a (ITGAL) Human Monoclonal Antibody [Clone ID: hu1124 (Efalizumab)]

#### Product data:

Product Type:	Primary Antibodies
Clone Name:	hu1124 (Efalizumab)
Applications:	BI, FC
Reactivity:	Human
Host:	Human
Isotype:	IgG1, kappa
Clonality:	Monoclonal
Immunogen:	Efalizumab binds to CD11a, a subunit of leukocyte function antigen-1 (LFA-1), which is expressed on all leukocytes.
Specificity:	Binds to human LFA-1.  Efalizumab binds to the LFA-1 alpha I domain blocking the ICAM-1 binding site via steric hindrance.
Formulation:	PBS with 0.02% Proclin 300.
Concentration:	lot specific
Conjugation:	Unconjugated
Storage:	Please store at 4°C for up to 3 months. For longer storage, aliquot and store at -20°C. Avoid freeze and thaw cycles.
Stability:	3 years from dispatch.
Gene Name:	integrin subunit alpha L
Database Link:	<a href="#">Entrez Gene 3683 Human P20701</a>
Synonyms:	CD11A; LFA-1; LFA-1A; LFA1A



[View online »](#)

**Product images:**

Immunohistochemical staining of rat spleen tissue using anti-CD11a antibody (TA386007) hu1124 (Efalizumab). Anti-CD11a staining of formaldehyde fixed paraffin embedded rat spleen tissue, at 40x magnification. The human IgG1-chimeric version of hu1124 (TA386007) was used to stain samples at a concentration of 3  $\mu\text{g/ml}$ .