

## Product datasheet for **TA386002**

### **Cd8b1 Rabbit Monoclonal Antibody [Clone ID: YTS 156.7.7]**

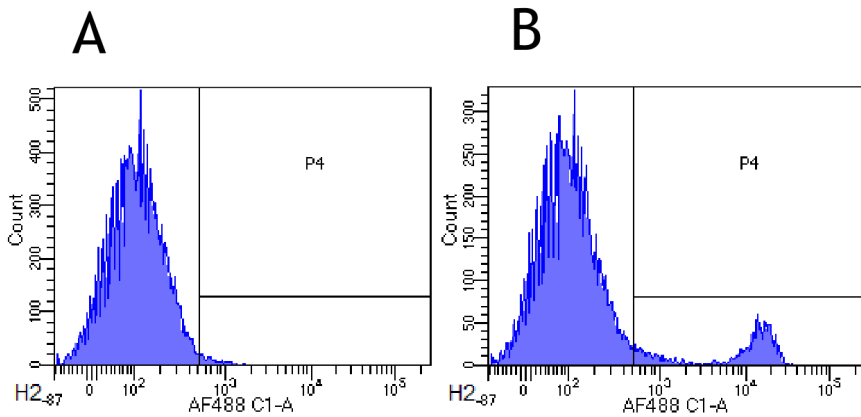
#### **Product data:**

<b>Product Type:</b>	Primary Antibodies
<b>Clone Name:</b>	YTS 156.7.7
<b>Applications:</b>	FC, IHC
<b>Reactivity:</b>	Mouse
<b>Host:</b>	Rabbit
<b>Isotype:</b>	IgG, kappa
<b>Clonality:</b>	Monoclonal
<b>Immunogen:</b>	Mouse CD8 (lyt-3).
<b>Specificity:</b>	The antibody recognises the B epitope of the mouse Lyt-3 (CD8) antigen. Has been used in CD8 subset depletion in vivo and flow cytometry studies.  This antibody recognizes murine CD8 beta.
<b>Formulation:</b>	PBS with 0.02% Proclin 300.
<b>Concentration:</b>	lot specific
<b>Conjugation:</b>	Unconjugated
<b>Storage:</b>	Please store at 4°C for up to 3 months. For longer storage, aliquot and store at -20°C. Avoid freeze and thaw cycles.
<b>Stability:</b>	3 years from dispatch.
<b>Gene Name:</b>	CD8 antigen, beta chain 1
<b>Database Link:</b>	<a href="#">Entrez Gene 12526 Mouse P10300</a>
<b>Synonyms:</b>	Cd8b; Ly-3; Ly-C; Lyt-3
<b>Note:</b>	This chimeric rabbit antibody was made using the variable domain sequences of the original format, for improved compatibility with existing reagents, assays and techniques.

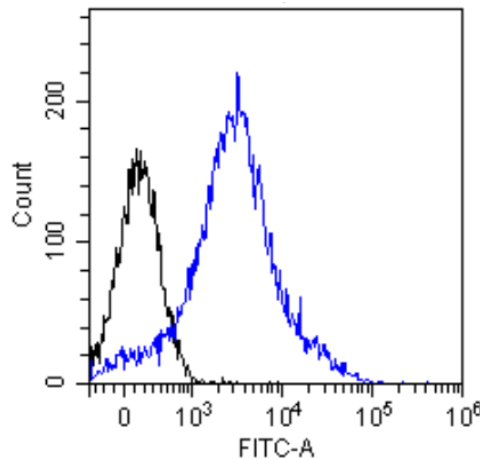


[View online »](#)

Product images:



Flow-cytometry using anti-CD8beta antibody YTS 156.7.7 (TA386002) Mouse lymphocytes were stained with an anti-CD44 control ([TA386028], panel A) or the rabbit-chimeric version of YTS 156.7.7 (TA386002, panel B) at a concentration of 1 µg/ml for 30 mins at RT. After washing, bound antibody was detected using a AF488 conjugated donkey anti-rabbit antibody and cells analysed on a FACSCanto flow-cytometer.



Flow-cytometry using the anti-CD8 beta antibody YTS 156.7.7 (TA386002) Mouse thymocytes were stained with unimmunized rabbit IgG antibody (black line) or the rabbit-chimeric version of YTS 156.7.7 (TA386002, blue line) at a concentration of 10 µg/ml for 30 mins at RT. After washing, bound antibody was detected using an anti-rabbit IgG JK (FITC-conjugate) antibody at 2 µg/ml and cells analyzed on a FACSCanto flow-cytometer.