

## Product datasheet for **TA385997**

### **Galanin (GAL) Mouse Monoclonal Antibody [Clone ID: 4B3]**

#### **Product data:**

<b>Product Type:</b>	Primary Antibodies
<b>Clone Name:</b>	4B3
<b>Applications:</b>	BI, ELISA, ICC, WB
<b>Reactivity:</b>	Human, Mouse
<b>Host:</b>	Mouse
<b>Isotype:</b>	IgG1, kappa
<b>Clonality:</b>	Monoclonal
<b>Immunogen:</b>	C-terminal fusions of KLH to human galanin,
<b>Specificity:</b>	The antibody binds to galanin with an affinity constant (Kd) of 0.07 nM reported for the original antibody.

The antibody binds specifically to galanin, a neuropeptide involved in many biological processes, including nociception, modulation and inhibition of action potentials, cognition, feeding, regulation of mood and blood pressure, smooth muscle contraction of the gastrointestinal (GI) tract and insulin release. Galanin acts on three G-protein coupled receptors, GALR1, GALR2 and GALR3, which are highly expressed in the brain, spinal cord and GI tract of humans and other mammals. Activation of the receptors has been reported to activate ATP-sensitive K<sup>+</sup> channels, and inhibit voltage-gated Ca<sup>2+</sup> channels. Galanin has been associated with the development of cancer, Alzheimer's disease, epilepsy, depression, eating disorders, diabetes and obesity. The monoclonal antibody 4B3 binds to the C-terminal region of Galanin, between residues 21 and 27, blocking its activity, and can be used clinically in the prevention and treatment of diseases mentioned.

<b>Formulation:</b>	PBS with 0.02% Proclin 300.
<b>Concentration:</b>	lot specific
<b>Conjugation:</b>	Unconjugated
<b>Storage:</b>	Please store at 4°C for up to 3 months. For longer storage, aliquot and store at -20°C. Avoid freeze and thaw cycles.
<b>Stability:</b>	3 years from dispatch.
<b>Gene Name:</b>	galanin and GMAP prepropeptide



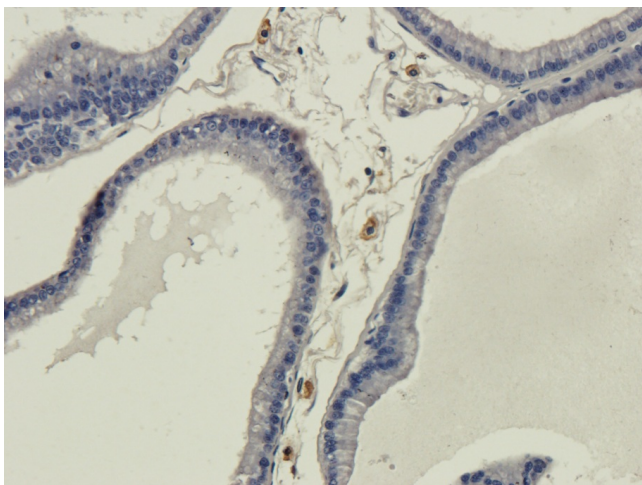
[View online »](#)

Database Link: [Entrez Gene 51083 Human P22466](#)

Synonyms: GAL1; galanin; GALN; GLNN; GMAP; MGC40167

Note: This reformatted mouse antibody was made using the variable domain sequences of the original Mouse IgG2a format, for improved compatibility with existing reagents, assays and techniques.

### Product images:



Immunohistochemical staining of rat prostate using anti-galanin antibody TA385997. Formalin fixed rat prostate slices were stained with TA385997 at 3  $\mu$ g/ml.