

## Product datasheet for **TA385985**

### **BACE2 Mouse Monoclonal Antibody [Clone ID: 1/ 9]**

#### **Product data:**

Product Type:	Primary Antibodies
Clone Name:	1/ 9
Applications:	IHC, WB
Reactivity:	Human
Host:	Mouse
Isotype:	IgG1, kappa
Clonality:	Monoclonal
Immunogen:	Human BACE2 244–333.
Specificity:	

The antibody binds specifically to BACE2, an enzyme responsible for the proteolytic cleavage of amyloid precursor protein (APP). The protein is cleaved between residues 690 and 691, leading to the formation of beta-cleaved soluble APP and a C-terminal membrane bound fragment (CTFβ). The latter is then cleaved by gamma-secretase to generate amyloid beta peptide. BACE is the rate-limiting enzyme in the pathway, and is a potential target in the treatment of Alzheimer's Disease (AD), a neurodegenerative disorder characterised by amyloid beta plaques within the brain. The BACE2 protein is encoded in chromosome 21, in a region critical for the development of Down's Syndrome, and may play a role in the amyloid beta deposition in the disease.

Formulation:	PBS with 0.02% Proclin 300.
Concentration:	lot specific
Conjugation:	Unconjugated
Storage:	Please store at 4°C for up to 3 months. For longer storage, aliquot and store at -20°C. Avoid freeze and thaw cycles.
Stability:	3 years from dispatch.
Gene Name:	beta-site APP-cleaving enzyme 2
Database Link:	<a href="#">Entrez Gene 25825 Human Q9Y5Z0</a>

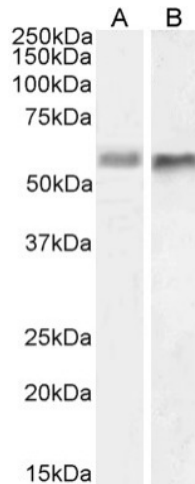


[View online »](#)

**Synonyms:** AEPLC; ALP56; ASP1; ASP21; BAE2; CDA13; CEAP1; DRAP; Memapsin-1; Theta-secretase

**Note:** This reformatted mouse antibody was made using the variable domain sequences of the original Mouse IgG format, for improved compatibility with existing reagents, assays and techniques.

### Product images:



Western Blot using anti-BACE2 antibody 1/9 (TA385985) HeLa (A) and U251 (B) cell lysate samples (35µg protein in RIPA buffer) were resolved on a 10% SDS PAGE gel and blots probed with the chimeric mouse IgG1 version of 1/9 (TA385985) at 1 µg/ml before detection using an anti-mouse secondary antibody. A primary incubation of 1h was used and protein was detected by chemiluminescence. The predicted running size for BACE2 is 56.2 kDa. TA385985 successfully detected BACE2 in HeLa and U251 cell lysate samples.