

## Product datasheet for **TA385984**

### CD55 Rabbit Monoclonal Antibody [Clone ID: LU30]

#### Product data:

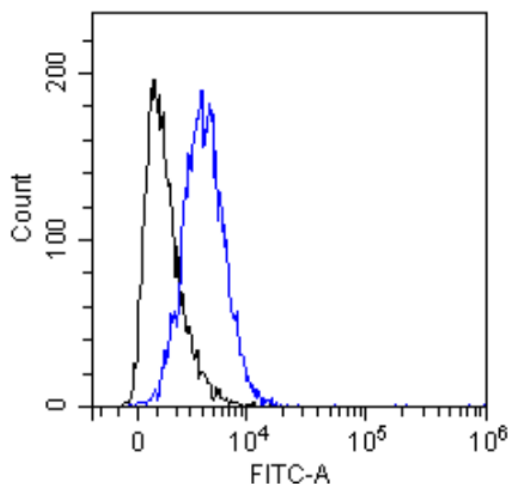
Product Type:	Primary Antibodies
Clone Name:	LU30
Applications:	ELISA, IHC, WB
Reactivity:	Human
Host:	Rabbit
Clonality:	Monoclonal
Immunogen:	Human CD55.
Specificity:	The antibody binds to CD55 with a Kd of 13 nM.

The antibody binds specifically to CD55, a glycosphosphatidylinositol-anchored protein which acts together with CD46 and CD59 to protect cells from complement-mediated cell lysis. The antigen recognises C4b, C3 and C3b complement components, and, by blocking their catalytic activity, inhibits the formation of the membrane attack complex. CD55 is overexpressed in many tumour cell lines, thereby inhibiting complement-mediated cell lysis and increases tumour resistance to immune attacks.

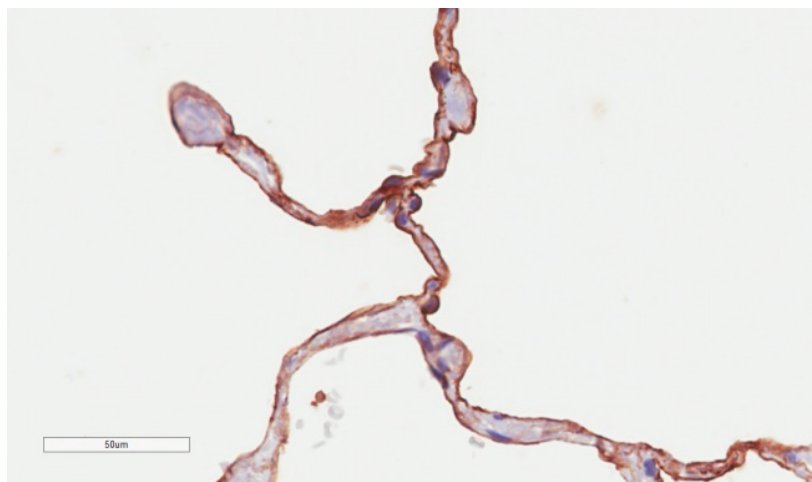
Formulation:	PBS with 0.02% Proclin 300.
Concentration:	lot specific
Conjugation:	Unconjugated
Storage:	Please store at 4°C for up to 3 months. For longer storage, aliquot and store at -20°C. Avoid freeze and thaw cycles.
Stability:	3 years from dispatch.
Gene Name:	CD55 molecule (Cromer blood group)
Database Link:	<a href="#">Entrez Gene 1604 Human P08174</a>
Synonyms:	CR; CROM; DAF; TC
Note:	This chimeric rabbit antibody was made using the variable domain sequences of the original Human format, for improved compatibility with existing reagents, assays and techniques.



[View online »](#)

**Product images:**

Flow-cytometry using the anti-CD55 (Complement decay-accelerating factor) antibody LU-30 (TA385984) U937 cells were stained with unimmunized rabbit IgG antibody (black line) or the rabbit-chimeric version of LU-30 (TA385984, blue line) at a concentration of 10 µg/ml for 30 mins at RT. After washing, bound antibody was detected using an anti-rabbit IgG JK (FITC-conjugate) antibody at 2 µg/ml and cells analyzed on a FACSCanto flow-cytometer.



Immunohistochemical staining of human lung tissue using anti-CD55 antibody (TA385984) LU30 Anti-CD55 (Complement decay-accelerating factor) staining of paraffin embedded human lung tissue using the rabbit-chimeric version of LU30 (TA385984). Antigen retrieval was achieved by microwaving in citrate buffer (pH6), followed by blocking with protein block serum-free buffer. Primary antibody incubation with TA385984 was carried out at 4 µg/ml for 30 minutes. Samples were then incubated with an anti-rabbit IgG HRP secondary antibody for 20 mins followed by DAB (3,3'-diaminobenzidine), and counter staining with haematoxylin. Strong staining of the epithelial surface of alveoli may be observed. Recommended concentration, 2-4 µg/ml.